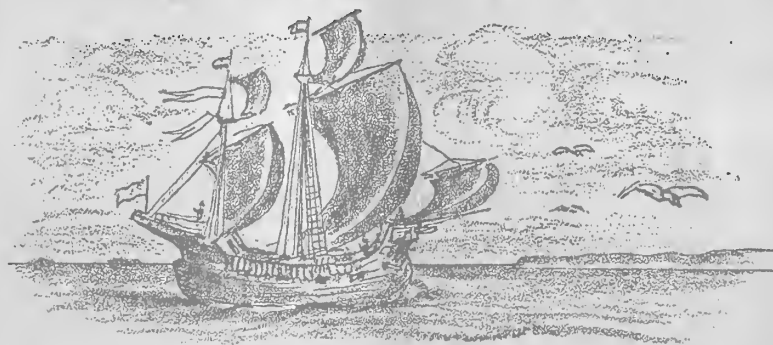


The Exposition 1916 *in Black and White*



Being a series of pencil
drawings of the Panama
California International
Exposition, 1916.
by Elton T. Brown.



Published and Copyrighted by The Coronado Strand,
Coronado, California, 1916.

San Diego, California

7872
BIB7

00

\$0.25

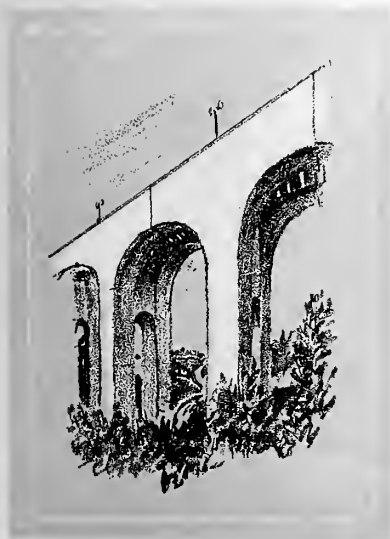
©CIA433318

no. 1.

now p. 10 '16.



ACROSS "EL PUENTE CABRILLO" LOOKING EAST TOWARD THE ARCH OF THE OCEAN



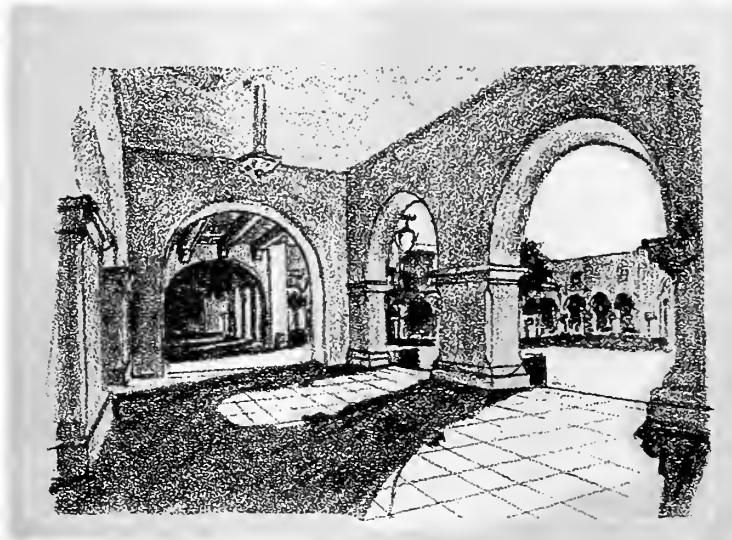
FROM the bridge an excellent general view of the Exposition Grounds is had, with the California Building and Tower in the immediate foreground.

THE smaller view is from below and gives an idea of the massiveness of the structure, which is 135 feet in height, 1010 feet in length and of unit cantilever construction.



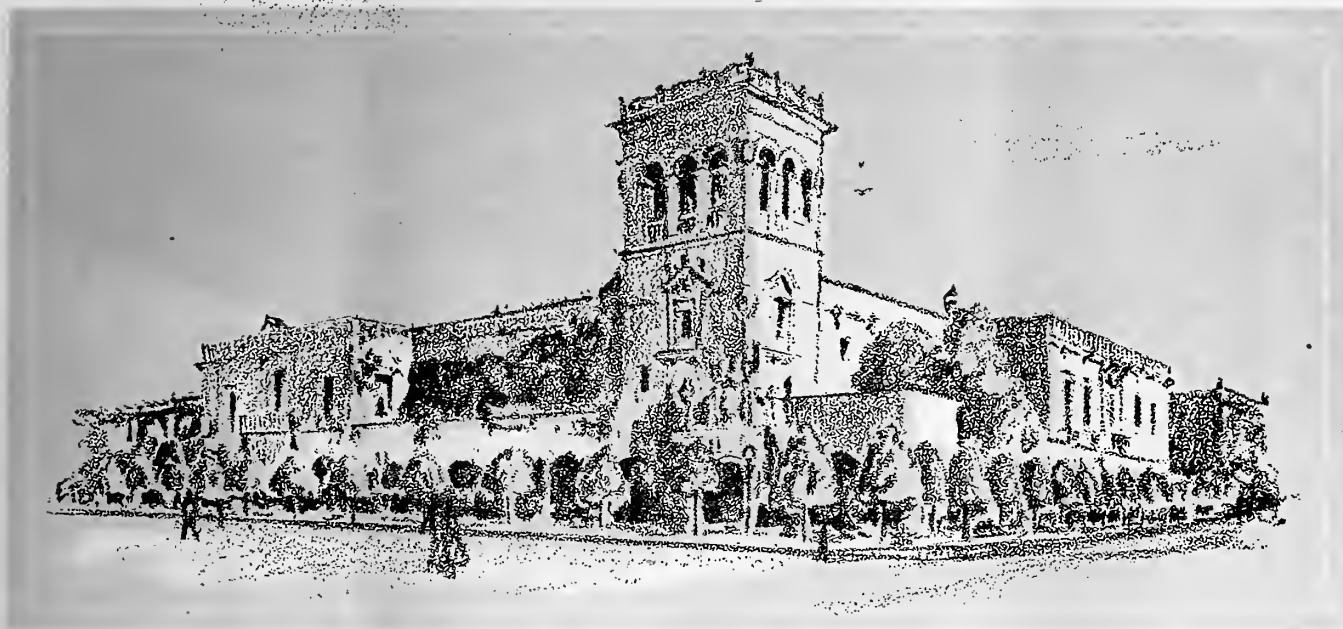
THE FACADE OF THE CALIFORNIA BUILDING

THE PRADO,
WEST FROM
PLAZA DE PAN-
AMA, with the Sci-
ence and Education
Building in the fore-
ground and the
Tower and Dome of
the California Build-
ing in the distance,
showing also the
arched passage to the
Plaza de California,
known as the Prado
Gate.



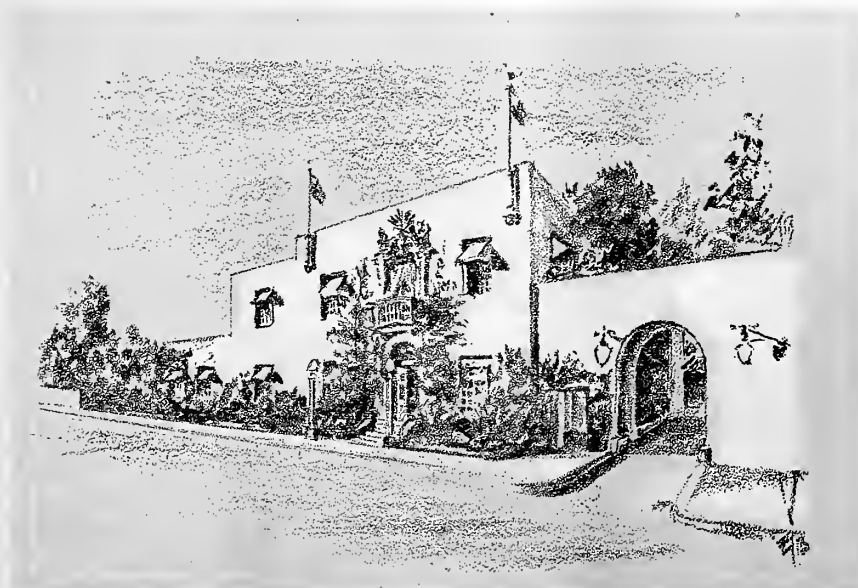
THE CLOISTERED ARCHWAY OF THE
CALIFORNIA QUADRANGLE, looking
across the Plaza de California to the entrance
of the Fine Arts Building. These arched cor-
ridors are a pleasing feature of the exposition.
There is a net work of them about the grounds,
connecting the principal buildings. They are
bordered with flowers and the archways fes-
tooned with vines, and as the walks are always
cool and seats plentiful a siesta in them is a
delightful memory.

JUN -8 1916



THE PAN-PACIFIC BUILDING. This structure contains the Arizona State Exhibit and the Hawaiian and Alaska displays; also a very comprehensive and attractively shown exhibit of the Phillipine Islands Commission.

THE ADMINISTRATION BUILDING, the General Offices of the Exposition Management, at the end of the bridge by the Arch of the Ocean as the western arch of the California Quadrangle is known.





THE COURT OF THE SCIENCE AND EDUCATION BUILDING, at the Entrance to the Hall of Ethnology, showing the Arched Passage along the north side of the Prado and the Tower, which is the feature of this Building.

THE ARCHWAY AND ENTRANCE to the Kern and Tulare Counties Building from La Via de los Estados, a graceful and dignified portal.



AN ARCHED PASSAGE BETWEEN TWO OF THE
BUILDINGS

TOWER AND DOME OF
THE CALIFORNIA
BUILDING from the Eucalyptus
Gardens at the rear. This
is a permanent building of
Spanish Renaissance design,
graceful in construction, its
tower and dome form the dom-
inant note in the Architecture
of the Fair.





**THE RUSSIA AND BRAZIL BUILD-
ING**, with the Archway and walk at
the south side of the Plaza de Panama.
This building was known in 1915 as the
Indian Arts Building, and aside from a
very fine exhibit of Indian photographs is
occupied this year by the displays of the
two countries named in the title.

THE MISSION HOME of the Exposition Fire
Department. This building is an exhibit
in itself and is well supplied with the latest fire
fighting equipment, the workings of which the
boys are always ready and willing to explain.



THE PLAZA DE PANAMA, from the south, showing the Government Building, formerly the Sacramento Counties Building at the left, also the Pan-Pacific Building to the right. The Plaza is the center of Exposition Activities. It was from the platform in front of the Government Building that Secretary Lane and Governor Johnson addressed the people at the dedication ceremonies March 18th, 1916. Here also most of the special events are staged. Daily concerts are held and dress parades of the U. S. Marine Corps, stationed on the Grounds.



A PATHWAY IN THE EUCALYPTUS GARDENS

THE SCIENCE AND EDUCATION BUILDING.

This drawing was made from the platform in front of the Government Building on the North side of the Plaza. The building is filled with a most remarkable anthropological exhibit, now the property of the San Diego Museum Association, but collected espec-



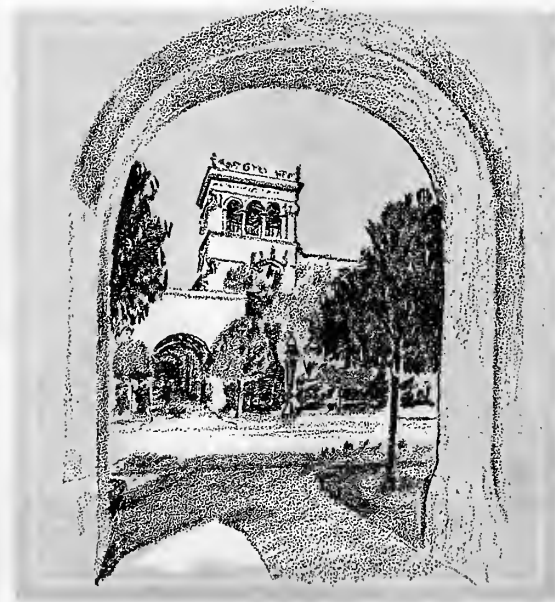
ially for the San Diego Exposition by Dr. Ales Hrdlicka. This collection is supplemented by archaeological displays and ethnological exhibits from the Smithsonian Institute. Arrangements have been made to make this exhibit permanent.

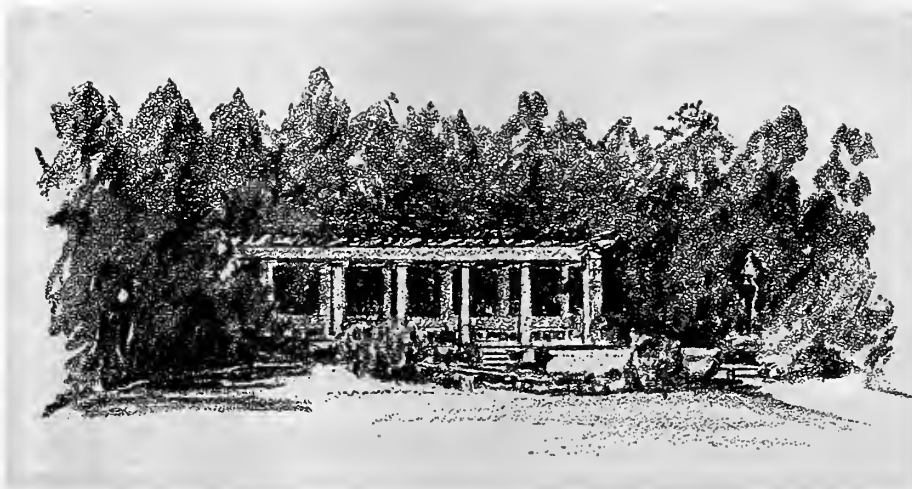
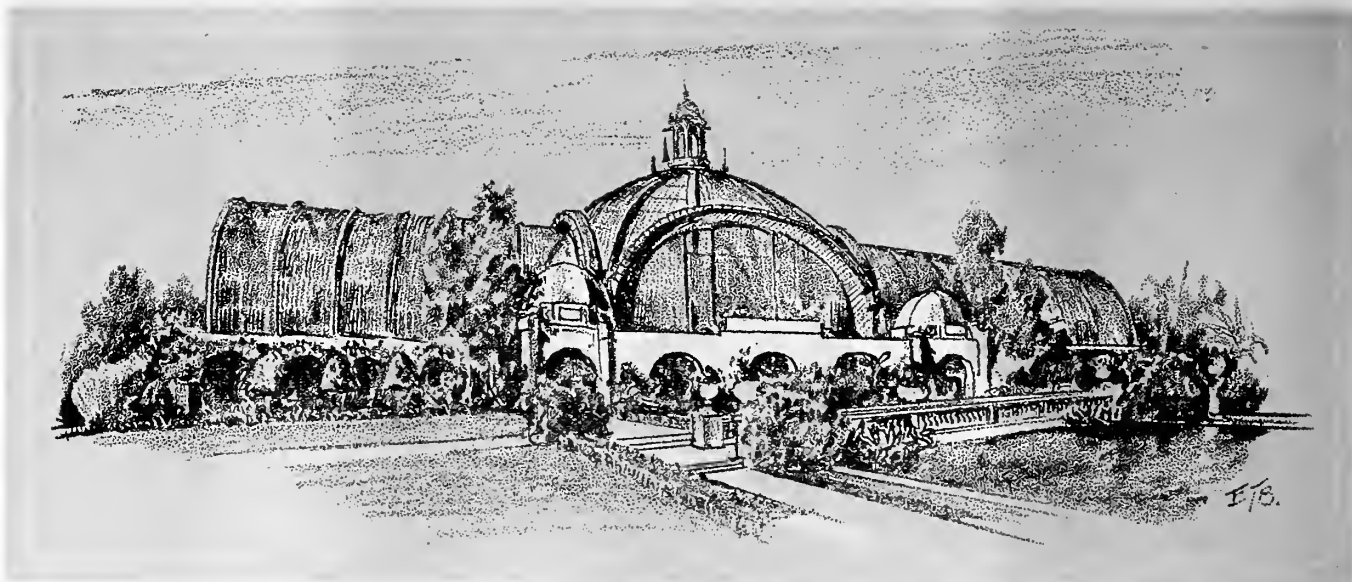
PAN, in his niche and fountain by the pathway from the Plaza de Panama to the Eucalyptus Gardens.



THE FOREIGN ARTS BUILDING, from the Plaza with a glimpse up the Prado toward the East Gate, or Main Entrance to the Grounds. This Building contains the exhibits of Italy, Spain, Persia, Germany and Japan. The showing of Italian marbles is very attractive, as is also the gallery of contemporary Spanish paintings, affording an unusual opportunity for Americans to study the work of some of the best artists of sunny Spain.

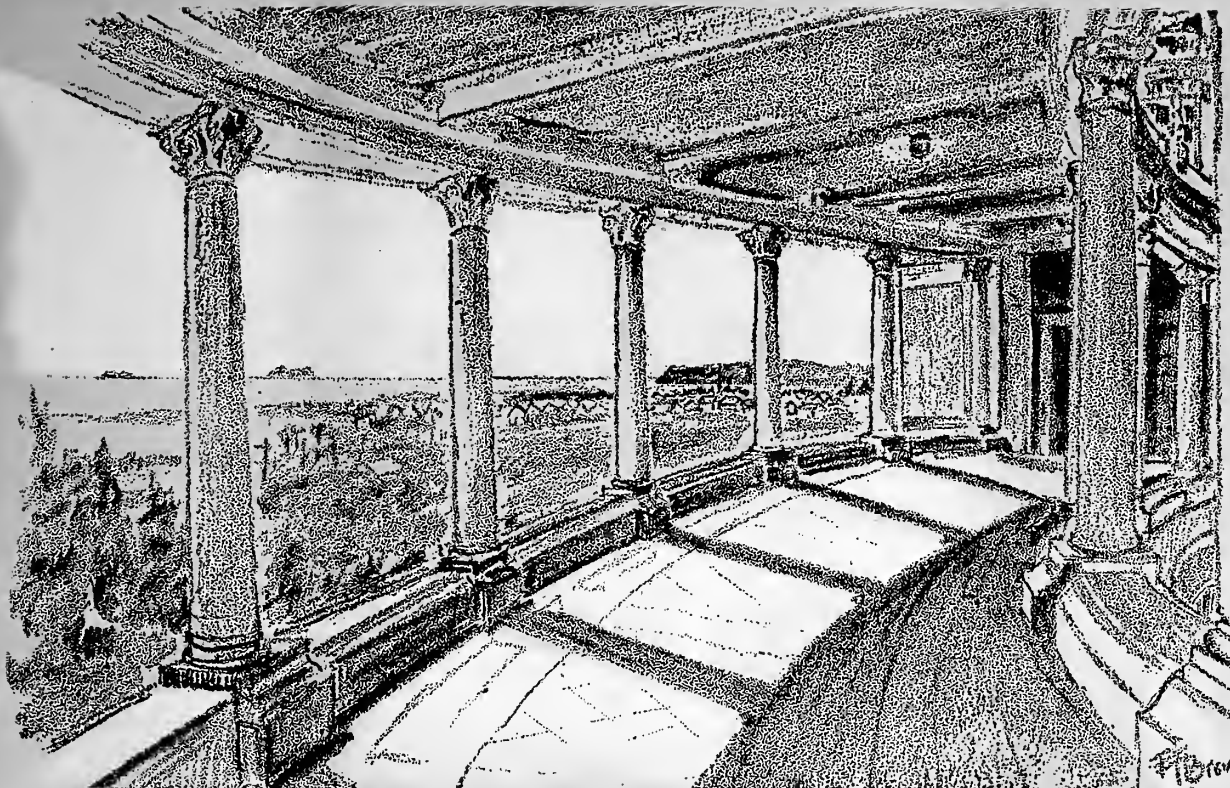
THE PAN-PACIFIC TOWER seen through the archway of the Foreign Arts Building.





**THE BOTANICAL BUILD-
ING**, the center and nu-
cleus around which the Botani-
cal Gardens are clustered, is a
large structure built of laths, in
graceful curves, and is filled with
a profusion of rare and tropical
plants.

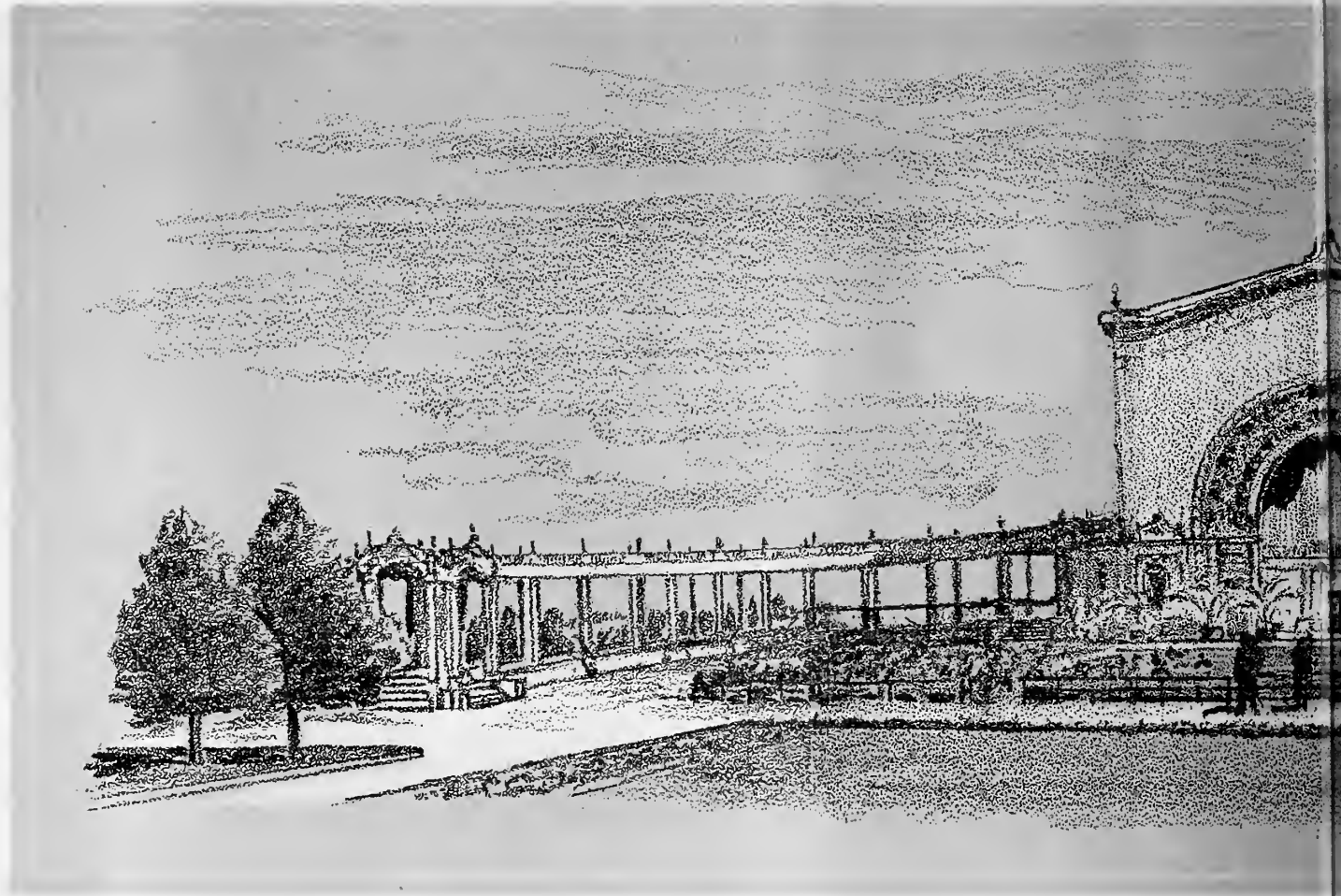
LEAP YEAR COURT, a ro-
mantic spot, at the west
side of the Botanical Gardens.



FROM THE COLONNADE OF THE GREAT
ORGAN, looking across the City and Bay to Point
Loma and the line of the broad Pacific with the Coronado
Islands on the horizon.

HEADQUARTERS of the International Theosophical Society
and the Universal Brotherhood. The little view was made
from the Park across Palm Canyon.





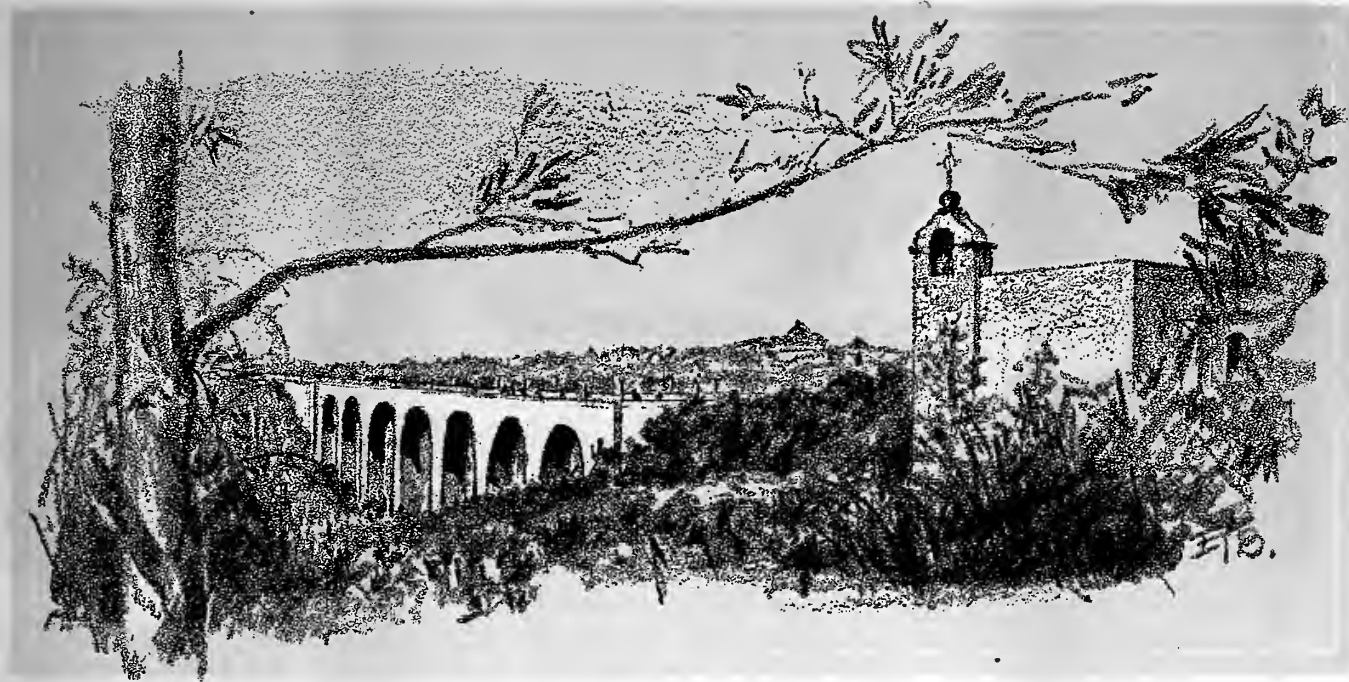
THE GREAT ORGAN, as the out-of-doors pipe organ is frequently called, the gift of Joseph L. ... Fair. Its sweet toned melody can be heard in all parts of the Grounds and the Daily ... United States. It is out of doors, the audience remaining at all times under the dome of the ... with cathedral chimes, concert harp, drum and cymbals; there are four manuals and sixty ... design really striking, with its graceful central arch and the colonnades extending in the form of



THE SAN JOAQUIN COUNTIES BUILDING, WITH DISPLAYS FROM SAN JOAQUIN, CALAVERAS,
MERCED, MADERA, MARIPOSA, FRESNO AND KINGS COUNTIES



U. S. GOVERN-
MENT BUILD-
ING on the Alame-
da. Displays of the
Agricultural Depart-
ment and Weather
Bureau, with demon-
stration of equipment
and explanation of
methods in each de-
partment.



PUENTE CABRILLO FROM THE PARK.

The graceful arches and dignified span of this bridge across the Canyon has been pictured in more ways than any other one subject on the grounds. However, this view from the Park is one not usually shown.

THE ENTRANCE TO PEPPER GROVE, at the head of the Prado, a restful picnic park, with a playground for the little folks.





THE SOUTHERN CALIFORNIA COUNTIES BUILDING,
containing exhibits from Ventura, Los Angeles, San Bernardino,
Riverside, Orange, Imperial and San Diego Counties.

THE MODEL RANCH is a demonstration of living conditions prepared by
the Southern California Counties Association.



A. W. ROBERTSON, ARTIST IN CLAY



THE PRADO, THE MAIN THOROUGHFARE OF THE EXPOSITION AT ITS JUNCTION WITH THE ALAMEDA

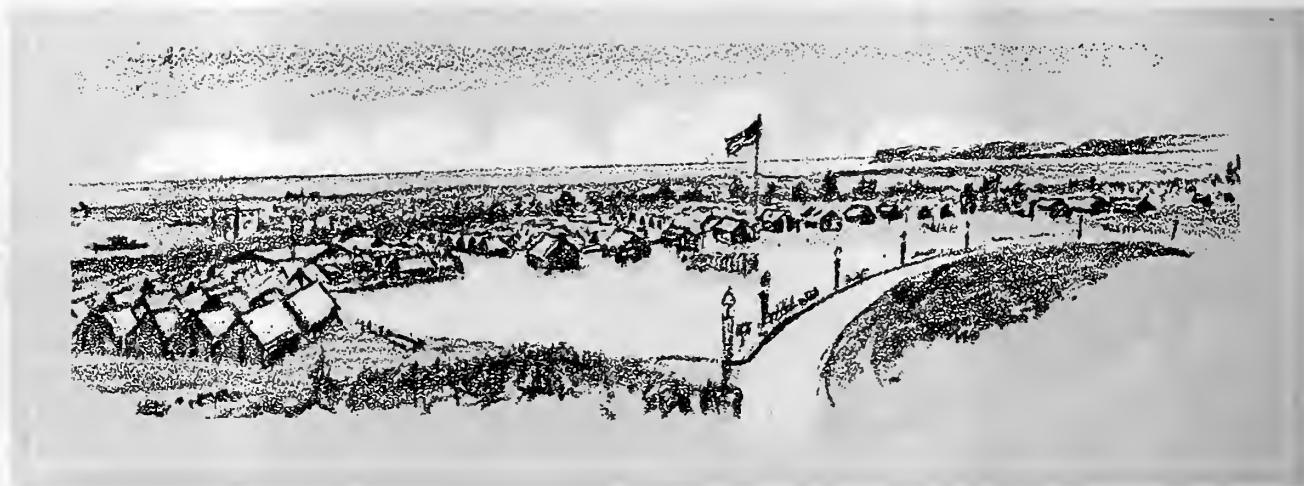
THE KERN AND
TULARE COUN-
TIES BUILDING,
containing a compre-
hensive display of the
diversified products
and industries of the
two sister counties at
the southern extrem-
ity of the San Joa-
quin Valley.





THE BOTANICAL GARDENS. Looking across the Lagoon to the rear entrance of the Foreign and Domestic Industries Building. The Memorial Tablet to Fray Junipero Serra, the founder of the California Missions, faces the Botanical Gardens from the back of this building.

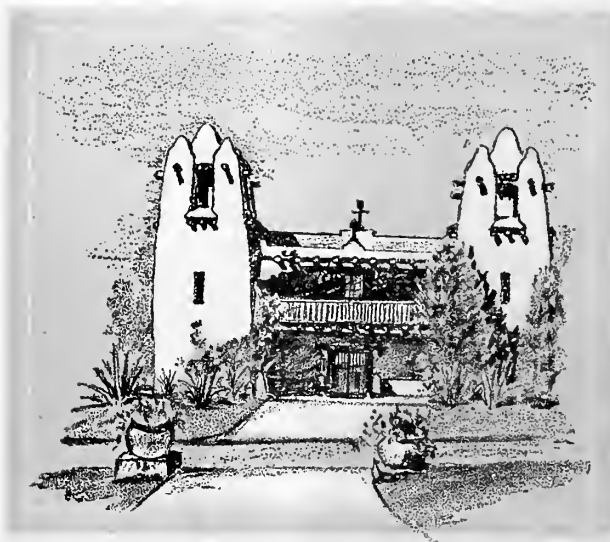
THE CAMP and Parade Grounds of the United States Marine Corps at the foot of La Via de los Estados. One thousand men are quartered at this point and their drills and dress parades on the plaza and the music of their bands add much to the enjoyment of Fair visitors.



THE UTAH
BUILDING, an imposing structure on the Avenue of States; wherein are described the resources of the great State of Utah and something of what it has already accomplished. A large relief map is one of the exhibits, and detailed information is supplied as to arid land and irrigation projects and Government Land entries.



THE MONTANA
BUILDING, also upon the Avenue of States, gives evidence of Montana's great possibilities as an agricultural and dairy section. The building is the gift of Senator W. A. Clark and is decorated with grains and other Montana products. A feature of this building is the quiet and comfort of the rest rooms.



THE PATIO OF THE NEW MEXICO BUILD-
ING, which is a reproduction of the Franciscan
Mission erected in 1629 A. D. on the Rock at Acoma,
in western New Mexico. It is the only ecclesias-
tical structure which survived the Pueblo Rebellion
of A. D. 1680. The reproduction of the Old Church
has been done with such fidelity of detail, even to
the log rafters and the quaint fireplaces and the
chapel itself, that one feels the spell of the original;
something of an involuntary veneration which is
noted in the presence of things that are old. It
is a very satisfactory Building.

THE TOWERS AND ENTRANCE TO THE MISSION
CHAPEL, used as a Lecture Room.



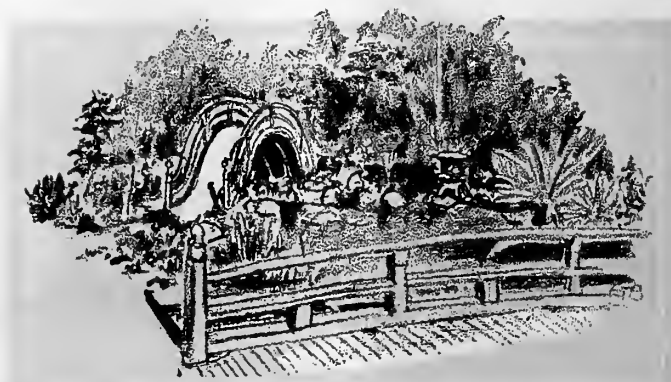
THE TAOS PUEBLO IN THE PAINTED DESERT is an exact reproduction of the original in Northern New Mexico. The Pueblo Indians are living here exactly as they are at home, busy with their pottery making, basketry and blanket weaving.

IN "APACHE LAND" of this same exhibit may be found the Apache Indians in their Wickiups, the same as one would find them on the Arizona reservations.





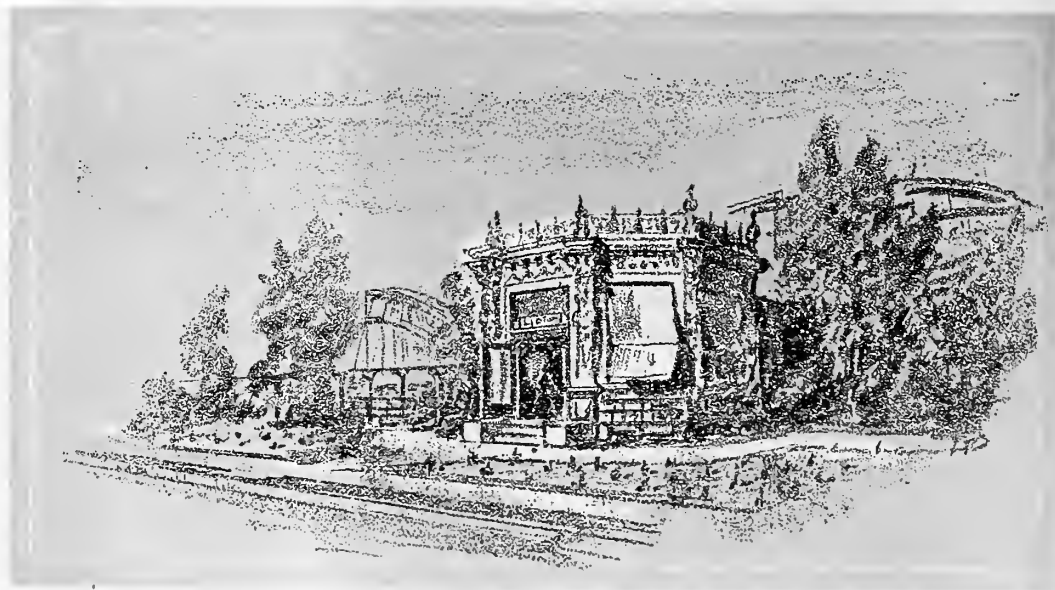
THE JAPANESE TEA PAVILION, next to the Botanical Building, and surrounded with an exquisite Japanese Garden, where always is the music of trickling water and peculiar Oriental plants and dwarf cedars and gold fish in the pool. An enchanted garden where dainty Japanese maids, in their native costumes serve tea and cakes to resting wayfarers.





THE PALACE OF MINES, FORMERLY THE WASHINGTON STATE BUILDING

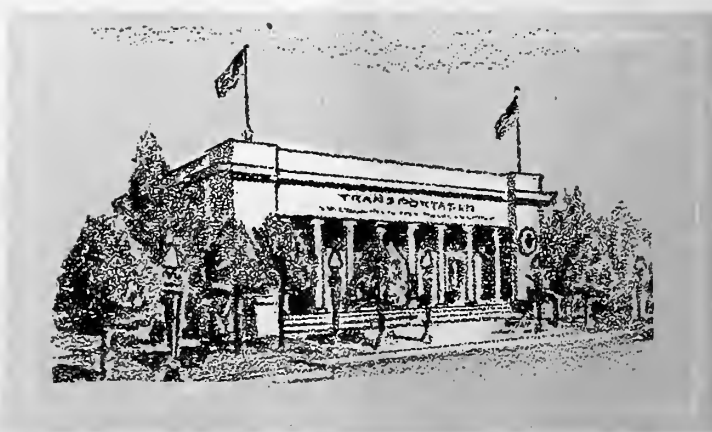
THE CANADIAN EXHIBIT shows convincingly the wonderful development and possibilities of Canada. The accuracy of the information given, the comprehensive scope of the displays, the marvelous attention to detail and the effectiveness of results obtained, put this Exhibit in a class by itself. This picture includes only a portion of the interior.



LIPTON'S TEA PAVILION, on the Alameda, where tea is served to all comers. The Gardens about the building are filled with growing tea plants and the explanations of the Cingalese tea grower in attendance, as to methods of picking and curing the tea is very interesting.

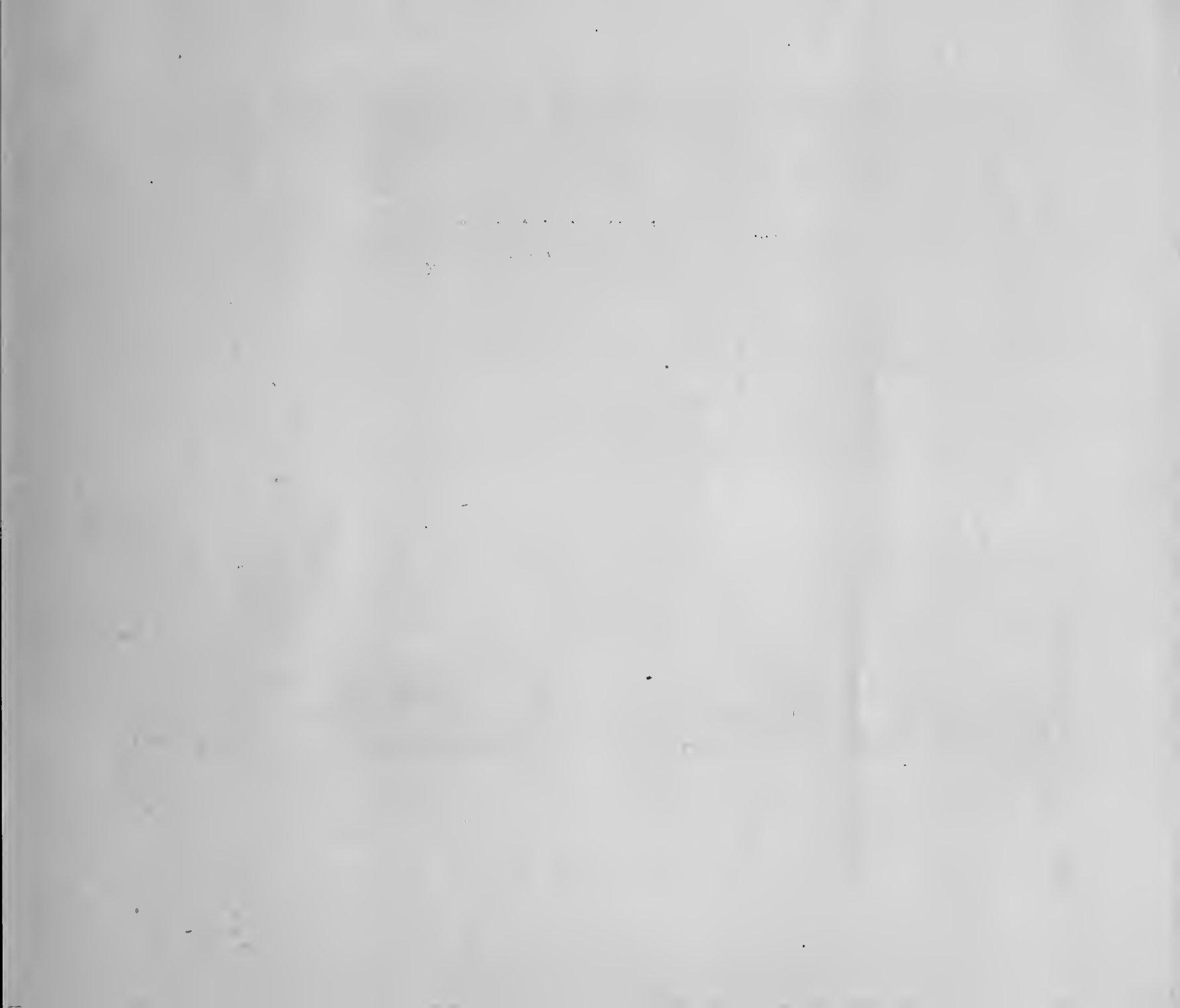


THE ALAMEDA COUNTY BUILDING AT THE ENTRANCE TO LA VIA DE LOS ESTADOS



THE EXPOSITION HEADQUARTERS OF THE UNION PACIFIC AND SALT LAKE ROADS. TRANSPORTATION THEIR SPECIALTY

N. B.—These are all reproductions of the original free hand drawings and are not, in any instance, drawn from a photograph.
ELTON T. BROWN



The **Exposition** **1916** *in Black and White*



THE ENTRANCE TO THE ISTHMUS, WITH ITS MILE OF AMUSEMENT HOUSES AND MIRTH PROVOKING DEVICES

San Diego, California