

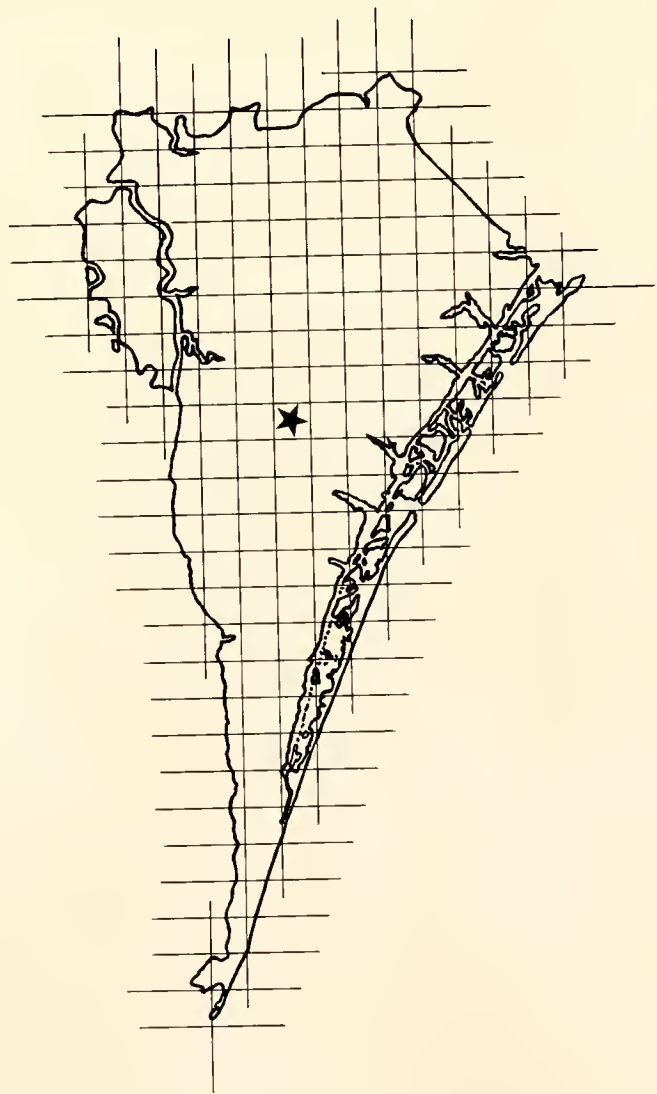
# FLEDGLING

1962









**WILMINGTON, N. C.**

# Fledge



PUBLISHED BY

THE STUDENTS OF



ling

WILMINGTON COLLEGE 1962

Miss Frances Best, *Editor*

Miss Barbara Brodnax, *Business Manager*

# CONTENTS



WE LEARN



WE PARTICIPATE



WE EXCEL



WE PLAY



WE ADVERTISE







## FOREWORD

A wise philosophical historian has justly written that "A people which takes no pride in the noble achievements of a remote Ancestry, will never achieve anything worthy to be remembered by remote descendents." It is with this idea in mind that the members of the *Fledgling* staff have undertaken to renew the venerable distinctions of Colonial days in Wilmington and to entwine these age old branches firmly around our new and progressing Wilmington College. Wilmington has never placed its claim to distinction in a large and rapid growth of population, but

to its historic past, as well as to those natural advantages which large numbers of people can never supply, but which form an asset of value which cannot be calculated. Therefore the 1962 *Fledgling* is offered to the students of Wilmington College and others of the area in the hope that they will see that the history of the city, which is characterized in our first buildings, should be appreciated and considered as a thing of value purchased by a community rightfully owning it as a part of its heritage.

# DEDICATION...

The 1960-61 Wilmington College Baseball Team ended their 17-2 season record with a trip to the National Junior College Championship Tournament in Grand Junction, Colorado. This long trip proved to be successful as the team defeated Mesa Junior College in the final game of the tournament, thus winning the title of National Champions.

The members of the 1960-61 team are, seated, Ronnie Smith, Louis Howard, Perry Burchette, Wayne Taylor, Phil Stephenson, Hiram Lee, Lawrence Keith, and Larry Edens; standing, Coach Bill Brooks, David Miller, and Bill Haywood.

Ronnie Durham, pitcher of the champion team, was selected as Most Valuable Player in the tournament. Durham, David Miller, and Wayne Taylor were named to the All-Star team.

Bill Haywood ended the season with a 7-1 record. Ronnie Durham tallied 7-0; and Louis Howard, 4-1.

William J. Brooks, Coach





**NATIONAL JUNIOR**

**COLLEGE CHAMPIONS**



Governor Terry Sanford speaks at the dedication services held in the fall quarter in the Library Building. The dedication was followed by an Open House.

## WILMINGTON COLLEGE CAMPUS . . .

Talented Ann West rehearses her part as "Media" in Hoggard Hall.



Wilmington College has played an important role in the lives of many people through the years it has been in existence. The college has been an important asset for the Wilmington area, but now it takes on additional duties as its growth comes into full view.

The new campus is a symbol of the historic events which have led to the present status of Wilmington. The city is an old one, filled with many relics and memories of past days.



Doug Hunt poses in his suit from "Family Affair."

## SCENE OF VARIED ACTIVITIES

Barbara Brodnax rides in the parade of contestants for Homecoming Queen.



Students help to build equipment for WILC.



The Azalea Festival is a highlight for Wilmington College students. Shannon Abbott and Ann Ferguson admire Greenfield Park.



## HISTORIC GROWTH . .



The ballgame in Florence, South Carolina, proved to be successful for the team and school.



The Warmstream Guards march in the Homecoming Parade.

The knees of the May Queen of Wilmington College were slightly damaged when she attempted the snow sled on campus.





Are you sure this is the way they did it?

# PROGRESS

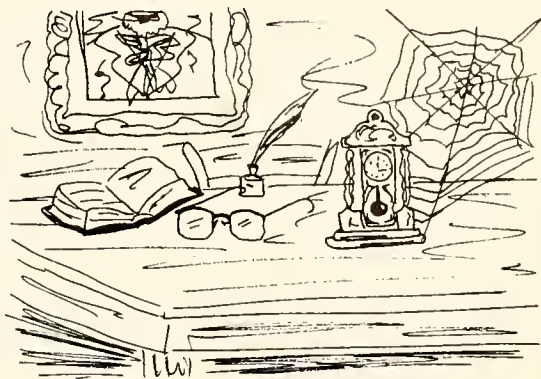
Even as the college now becomes an important part of the society, it becomes a mark of distinction for that which we now call past traits or old hobbies. College is a place for conversion of varied forms; it is a place for maturity. Thus, Wilmington College serves its dual purpose.

The college is a place for growth while it is a place for correction. It is one of the institutes of Wilmington that, while looking ahead, bears the traits of that which has gone before and cannot be changed.

The college life among the students is ever aware of these factors. The activities are varied and promote spirit and ideas.



School spirit in Florence, South Carolina.



College presents its challenges.





Dr. Hoggard is a familiar sight around Wilmington College.



## SCHOOL SPIRIT . . .

The winners of the contest at the Masquerade Ball were very unusual indeed.



Campus life is complex in all schools, but its beginning can be the more complex. Wilmington College faced many trials during its first quarters of operation on the new campus.

The organization of clubs and teams prove to be challenges to students and faculty. Many of these groups began very slowly, but like Wilmington College and its fellow institutions of Wilmington, growth and progress seem to be a definite goal.





Anne West, Beth Fineberg, Robert Autry, Barbara Bradley, and Doug W. Swink, director, find that the sea shore is a nice place to rehearse.

# AN ACTIVE CAMPUS

School spirit finally got underway in the tournament.



College is very difficult.





Dr. Randall works diligently for the betterment of Wilmington College. His office includes the responsibility of seeing that the needs of the students and faculty are answered.

## PRESIDENT OF THE COLLEGE . . .

Dr. William M. Randall  
President of Wilmington College



Serving Wilmington College for the eleventh consecutive year, Dr. William M. Randall is the first president of Wilmington College on its new site. The president worked responsibly and conscientiously in the Isaac Bear Building with many other people toward the present campus and classes; he now works toward its improvement, a four-year schedule, and widespread prestige.

Dr. Randall received his AB degree from the University of Michigan in 1921 and his AM degree in 1924. He received his PhD from Hartford Theological Seminary in 1929 where he graduated Summa Cum Laude. Dr. Randall has been on the General Education Board, has served as associate professor and later professor of library sciences at the University of Chicago, and he has been the Academic Dean of the U. S. Merchant Marine Academy.



**William J. Brooks**  
Dean of Students, AB,  
Atlantic Christian College,  
Associate Professor of  
Physical Education.



**Mrs. Atha Bloodworth**  
Bookstore



**Mildred H. Dorsey**  
Librarian



As Dean of Students, J. Marshall Crews is always willing to help students in adjusting to college life and planning for their future achievements.

**Dorothy P. Marshall**  
Registrar—Instructor in  
Business, BS, East Carolina  
College.

**Margaret Shannon Morton**  
Dean of Women—Professor of  
English, BS, Longwood College,  
MA, George Peabody College.

**A. R. Willis**  
Comptroller

## THE DIRECTORS

Due to the small student body, the faculty of Wilmington College is able to work closely with the students in their curricular and extracurricular activities. The administration is always ready to help the student in his difficulties and to give support and guidance to his organizations. The faculty gives the students a strong foundation on which to build his future life.

Faculty duties do not cease at the end of each fifty-five minute class period, but the instructors spend many hours in their offices conferring with "lost" students.





**Louis Henry Adcock**  
Associate Professor,  
Physical Sciences  
BS, MA

**Frank H. Allen**  
Associate Professor,  
Biological Sciences  
BS, MS



**Elizabeth Mary Bellamy**  
Assistant Professor  
of Modern Language  
AB, MA

**Walter C. Biggs**  
Assistant Professor,  
Biological Sciences  
BS, MS



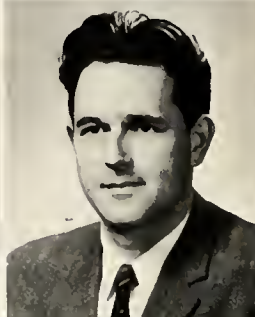
**Thomas P. Brown**  
Instructor in  
Mathematics  
AB

**Helena R. Cheek**  
Assistant Professor,  
Modern Languages  
AB, MA



**Joanne King Corbett**  
Assistant Professor,  
English  
AB, MA, PhD

**Calvin L. Doss**  
Associate Professor,  
Engineering  
BS, MEd



**Albert Carl Gay, Jr.**  
Assistant Professor,  
Social Sciences  
BA, MA

**Thomas Gay**  
Assistant Professor,  
Social Sciences  
BS



**Elinor Hamilton**  
Instructor of Business

**Linda Hines**  
Assistant Librarian  
BS



Mrs. Frank Allen serves Dean J. Marshall Crews and his wife at the Faculty Tea given by the Faculty Wives.

## THE FACULTY . . .



"I'll be first in the lunch line today!"



Dr. John T. Hoggard is served refreshments while Mr. Fred Vallianos and Mr. Larry Ingle approach the table.

Claude Howell  
Associate Professor, Art



Lloyd H. Hudson  
Associate Professor, Music  
BME, MM

Adrian D. Hurst  
Professor of Mathematics  
AB, MA



# INSTRUCTS AND AIDS

Homer Larry Ingle  
Assistant Professor,  
Social Sciences  
BA, MA

Thomas R. Lupton  
Associate Professor,  
Mathematics  
BS, MA

Thomas C. McCall  
Assistant Professor, English  
BA, MEd



Rolla C. Nelson  
Asst. Prof., Physical  
Sciences, BS, MA

Duncan P. Randall  
Prof. of Social  
Sciences, AB, MA

Gerald S. Rosselot  
Asst. Prof., English  
BS, MA

Alfred E. Saieed  
Asst. Prof., Physical  
Sciences, AB, MA

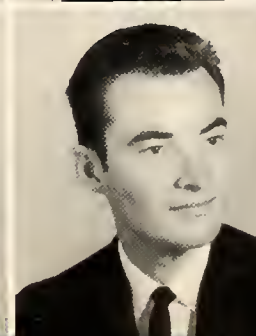


Douglas W. Swink  
Asst. Prof., English  
and Drama, BS, MA

Fred Toney, Jr.  
Asst. Prof.,  
Mathematics, BS, MA

Fred Vallianos  
Asst. Prof.,  
Psychology, BS, MA

George Zebrowski  
Prof. of Biological  
Sciences, BS, MS





# WE LEARN

The past method of educating the young ladies of the time portrayed has changed much, even though the watchful eye of the governess was a more rigid guarantee of finishing the books than those of today. This practice shows the want of the people for higher learning.

Education has been a necessity in the founding and development of many nations, just as it profoundly influences the character and success of individuals. Through education is found paths to achievement and happiness.

The methods of education change from time to time, but the value of it remains the same. The classes of Wilmington College are symbols of this value.







About the year 1730 a little settlement was begun on the east of the Cape Fear River opposite the junction of its two main branches, which was dignified by the name of New Liverpool. In 1732 the name was changed to Newton. At the session of the Assembly held at New Bern February 25, 1739, among the acts passed was one entitled "An Act for erecting the village called Newton, in New Hanover County, into a township by the name of Wilmington, and regulating and ascertaining the bounds thereof" — the new name having been suggested by the Governor in honor of the Earl of Wilmington.

In 1760 Wilmington was erected into a borough, and the municipal government was entitled "The Mayor Recorder, and Alderman of the Borough of Wilmington." In 1766 the name of the municipality was changed to "The Commissioners of the Town of Wilmington." The first meeting of a public kind of which there is any record was held April 5, 1743, at which landowners met to elect commissioners for the ensuing year. Taxes were not levied by the commissioners of the town, but apparently by a vote of the inhabitants.

The first newspaper was established in Wilmington in 1764. It was not very successful and was discontinued in 1767.

With these earlier advancements the foundations for what we know as Wilmington, North Carolina, have been carved.

## MARKET STREET SHOWING OLD MARKET HOUSE



## SOPHOMORE CLASS OFFICERS

The officers of the Sophomore Class are Ed Mauney, president; John Galloway, vice-president; Barbara Brodnax, secretary; and Stacy Covil, representative. The second representative is Rita Sapp.

A gazebo, found on Chestnut Street, proves to be an item of admiration for two sophomores.

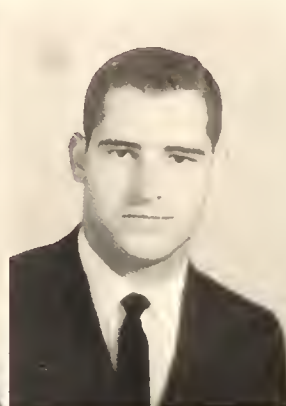


The 1961-62 Sophomore Class of Wilmington College takes many fond memories with it as it becomes the first graduating class of the new campus: the never-finished buildings, the air conditioning that arrived in time for winter, the first socials in the Student Lounge, the beginning of student broadcast of WILC, and the overtime ball game that was lost by only two points. The students will especially look back on the trials which they had to make for the future of the college.

In a few years these days will be a part of the history of Wilmington College. As one now looks back on the history of Wilmington, future generations will be looking back on the 1962 class. This class will recall many pleasant memories that helped Wilmington College to become a part of the history of Wilmington.

CHARLES ANDERSON

*Patience is power.*

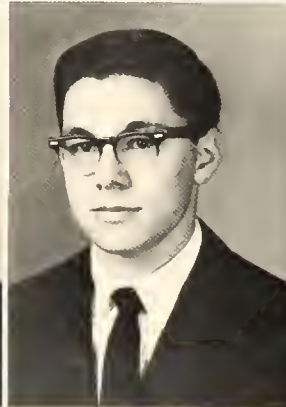


WILLIAM K. BALLAGH, III

*Wealthy in his friends.*

IRVING BAREFOOT

*Intelligence that demands respect.*



CHARLES BARNHILL

*Intelligent, dependable, and all the rest;  
That's what makes him one of the best.*

Engineers Club 1, 2 (Secretary 2); Panthamian Society 2.

## LEAD THE CAMPUS

BERNARD BASS

*Small in statue but big in heart.*



MARY ANN BATSON

*Jolly but not too gay;  
Good sense but not too serious.*

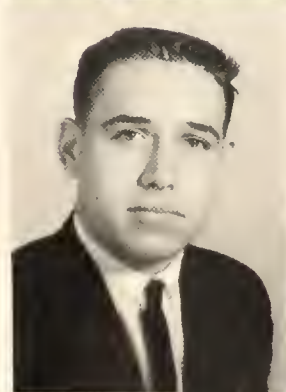
DONALD BATTS

*Good nature shines in all his actions.*

FRANCES BEST

*An ambitious girl with a smiling face;  
No one else could take her place.*

Fledgling Staff 1, 2 (Editor-in-chief 1, 2); Secretary of Student Council 2; Cotillion Club 2; Homecoming Court 2; Hostess for Dedications Service 2; Superlative "Best All Around" 2; Pen Pushers Club 2 (Entertainment Committee); Homecoming Dance Committee 2.



MARGARET BLAND

*A happy life consists of tranquility of mind.*

DOROTHY BRITTON

*Politeness costs nothing and gains everything.*

BARBARA BRODNAX

*The girl who wins is the girl who works.*

*Fledgling Staff 1, 2 (Business Manager 2); Sophomore Class Secretary 2; Superlative "Friendliest" 2; Wilmington College Theatre 1; Homecoming Dance Committee 2; Hostess for Dedication Services 2; Library Assistant 2; Homecoming Court 2; Cotillion Club 2.*

MARSHALL FRANKLIN BROWN, JR.

*He is truly happy who can make others happy too.*

*Fledgling Staff 1, 2 (Sophomore Assistant Editor 2); Superlative "Friendliest" 2; Homecoming Committee 2; May Dance Committee 1; Engineers Club 1; Christmas Dance Committee 1.*

## HOLD OFFICES . . .

PAT MOORE BROWN

*A smile is partial beauty won.*

*May Court 1 (Freshman Attendant); Cheerleader 1, 2 (Head Cheerleader 2).*

NEWMAN DONALD BUCK, JR.

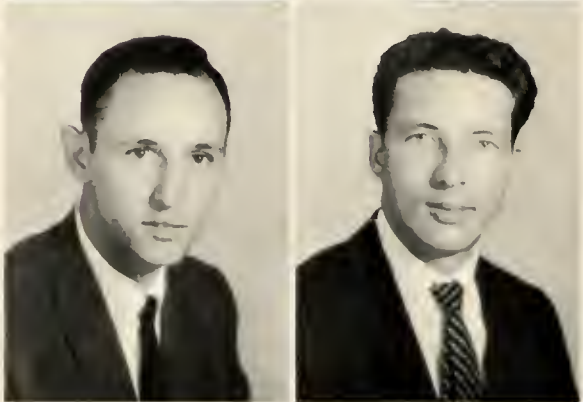
*Good humor and wisdom combined.*

JIM BURNISH

*The virtue lies in the struggle—not the prize.*

ROBERT CAPPS

*Enthusiasm is the life of the soul.*





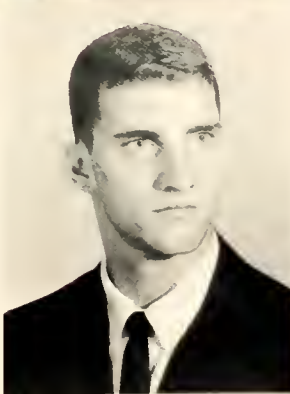
SYLVIA CARTER

*Quiet, yet happy, ambitious and sweet;  
Her friendship is really a wonderful treat.*

*Fledgling Staff 1, 2.*

JESSE COLLUM

*The great thing is to be master of yourself.*



JIMMY COOK

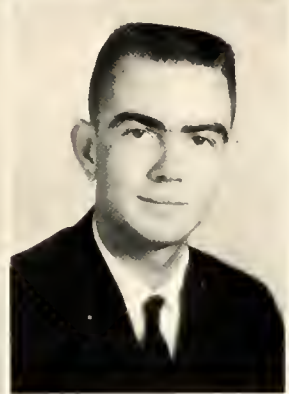
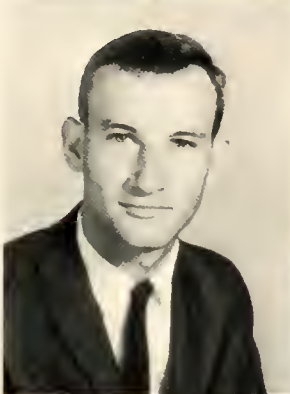
*Life is too short to worry.*

*Tennis Team 1, 2.*

JOE COPLAY

*My joy of life is hard to kill.*

## SPONSOR ACTIVITIES



JAMES COTTON

*A diligent worker, a wonderful friend;  
His willing leadership has helped us no end.*

Vice President of Freshman Class 1; Dance Committee 1; Chairman of Elections 2; Cotillion Club 2.

STACY COVIL

*Everything comes to him who waits—why hurry?*  
Representative of Sophomore Class 2; Cotillion Club 2.



MARY DEES

*She has a quiet and engaging way.*

DIANE DIETZE

*Not much talk—a great sweet silence.*



An array of styles displayed at the Masquerade Ball.

## WORK DILIGENTLY TOWARD



JACK DUNN

*He either finds the quality or makes it.*  
Wilmington College Band 1, 2.



CAMILLE EVANS

*A merry heart goes twice the way that tires a sad one.*

THOMAS L. EVANS

*Speak little, do much.*

JONNYE FLORA

*Full of the truest, deepest thought,  
Doing the very thing she ought.*  
Fledgling Staff 1, 2 (Features Staff); Wilmington College Seatoness 1.

ISABELL FOUSHEE

*Alert to all the finer things of life.*

JOSETTE FUTCH

*Her heart is sweet and her actions sweet.*



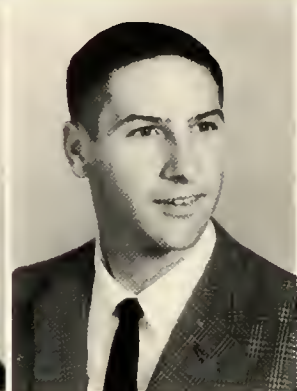
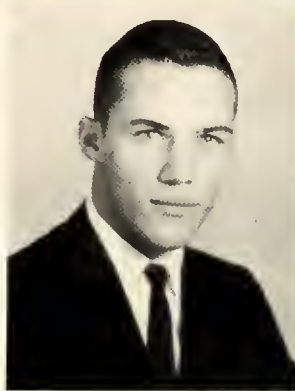
JOHN LAWRENCE GALLOWAY

*An acre of performance is worth a whole land of promise.*

Engineers Club 1, 2 (Chairman of Funds 2);  
Vice-president of Sophomore Class 2; Panthamian Society 2 (Secretary).

WILLIAM GODBOLD

*No man is happy who does not think so himself.*



## CAREER OBJECTIVES

A group of sophomores vote in the annual election of superlatives.





EUGENIE LEAH GOODMAN

*The personification of success—her qualities of intelligence, loyalty, and dependability will carry her far.*

May Court 1 (Freshman Attendant); Cheerleader 1, 2 (Head Cheerleader 2); Superlative "Best Looking" 2; Hostess for Dedication 2; Homecoming Committee 1, 2; May Dance Committee 1; Christmas Dance Committee 2.

DAVID GOOLD

*A sportsman having high ideals.*  
Wilmington College Baseball Team 1.



ELAINE GREGORY

*I poured my heart into a song.*  
Wilmington College Chorus 1, 2.

BILL GRISSOM

*Friendliness and calm ways are his clothing.*

## ORGANIZE NEW CLUBS . . .



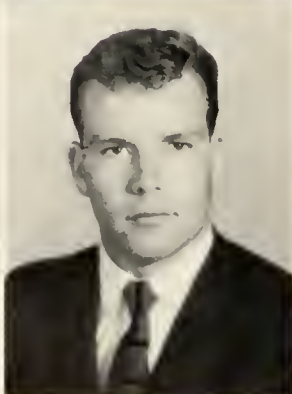
DIAN GRITZKE

*Striving for the best is always her endeavor;  
A friend once, a friend forever.*

Fledgling Staff 1, 2; Fledgling Beauty 2; Cheerleader 2; May Court 2 (Sophomore Attendant).

THOMAS W. HALL

*The gentle mind by gentle deeds is known.*



DORIS HARDISON

*Wit predominates in her personality.*

Wilmington College Seatoness 1; Fledgling Staff 1, 2; Faculty Secretary 2.

JIMMY HARRIS

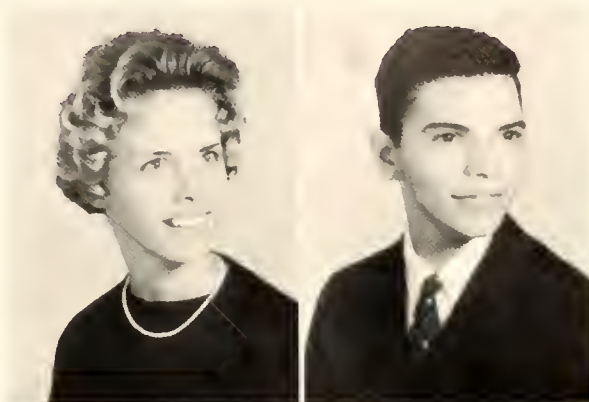
*Written on his face by nature's hand,  
These two words, "a gentleman."*



PEGGY ANNE HARRISS

*A cute little bundle of vivacious fun; popular with us all; calmness lends poise to her bearing.*

May Court 2 (May Queen); Co-chairman of Homecoming 2; Sophomore attendant to Cotillion Club; General Decorating Committee.



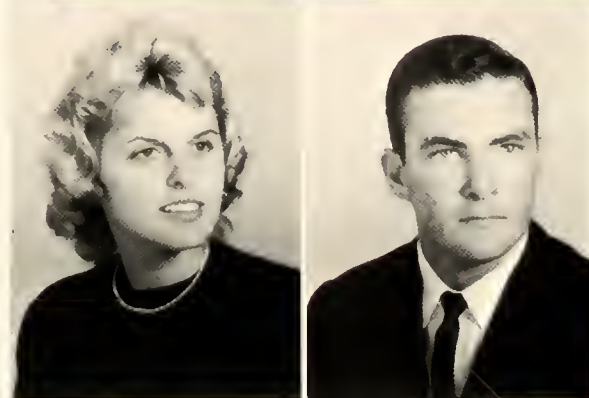
LIONEL HASTE

*A little nonsense now and then is relished by the wisest men.*

JUDY HAYES

*Happy and without a care.*

Engineers Club Sweetheart 2; Homecoming Court 2; Superlative "Most School Spirit" 2; Cheerleader 1, 2 (Assistant Head Cheerleader 2); Hostess for Dedication 2; *Fledgling* Staff 1, 2; Seahawk Staff 2; Homecoming Committee 1, 2; May Dance Committee 1.



WILLIAM K. HAYWOOD

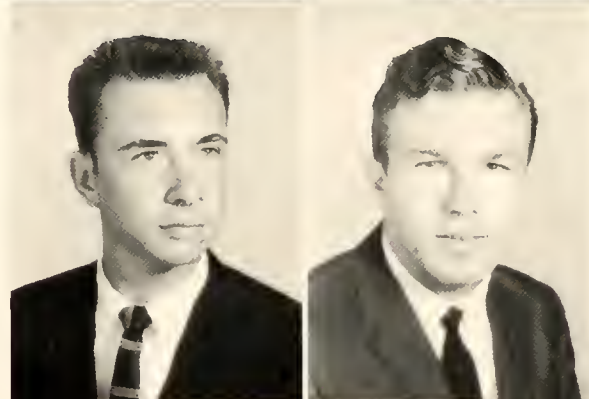
*Tall, dark, handsome, an all-around guy; For him we've breathed many a sigh.*

Wilmington College Basketball Team 1, 2; Wilmington College Baseball Team 1, 2; Superlative "Best Looking" 2.

## ELECT SUPERLATIVES

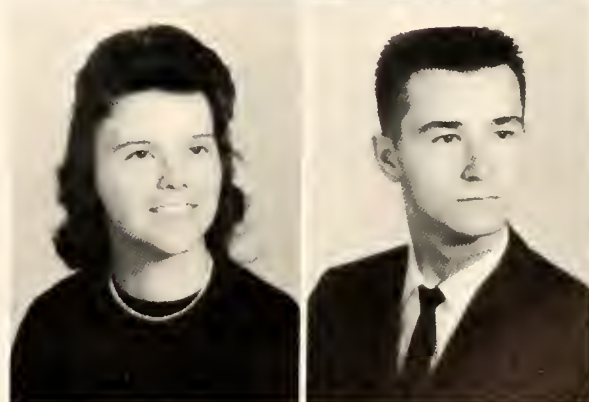
CLYDE HEATH

*He hath dependability—greater tribute hath no man.*



DOUGLAS HEWETT

*Where duty calls he's always found.*



SANDRA HOLDEN

*A conscientious worker, she is bashful and quiet; To all a sincere friend, we can not deny it.*

BOB HOWARD

*Happy am I, from care am I free; Why aren't they all contented like me?*

KAY HOWARD

*She walks with sunshine in her eyes.*

JENNINGS HUMPHREY

*The most manifest sign of wisdom is continued cheerfulness.*



SARAH HUNNICUTT

*Quick and lively, happy and gay;  
A smile for all who come her way.*

*Fledgling Staff 1, 2; Seahawk Staff 1, 2.*



DOUG HUNT

*To sing is to live.*

*Wilmington College Chorus 1, 2; Wilmington College Theatre 1, 2; Circle K Club 1, 2 (President 2).*

## HELP CONFUSED FRESHMEN

BASIL HURST

*Such originality is not to be equalled.*

MARCIA KALLFELZ

*Sincerity is in her heart as perfume in the flower.*

*Wilmington College Chorus 1, 2 (Top Twelve 1, 2); Fledgling Staff 2 (Activity Staff).*



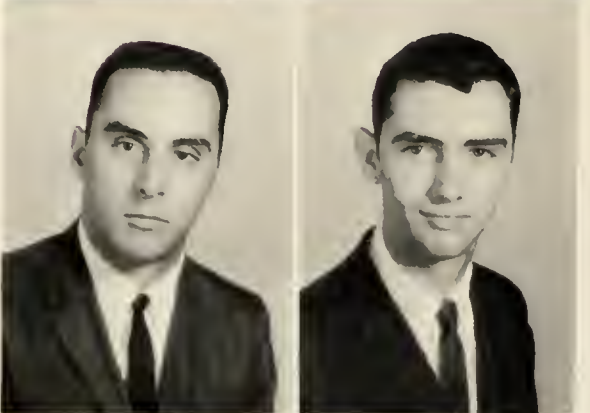
LAWRENCE KEITH

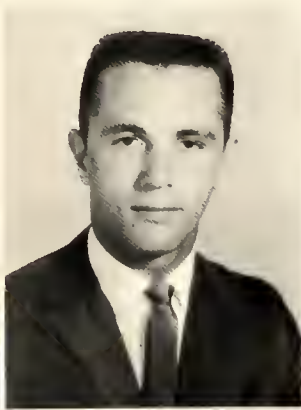
*In the desk, he's capable; at the plate, a wonder.*

*Wilmington College Baseball Team 1, 2.*

GRAHAM KENAN

*There are none like him, though there be many imitations.*





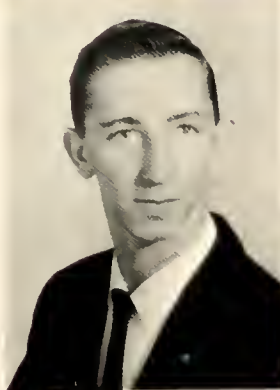
LARRY LANIER

*A level head, a steady hand;  
For a really fine person, he's your man.*

HIRAM LEE

*Man who possesses an opinion and a will.*

Wilmington College Baseball Team 1, 2; Superlative "Most Original" 2; Chemistry Lab Assistant 2.



RONALD LEE

*Smile and the world smiles with you;  
Laugh and the teacher stays with you.*

Circle K Club 1, 2 (Secretary 2); Wilmington College Chorus 1, 2 (Top Twelve 2); Pen Pushers 1; Wilmington College Theatre 1, 2; Panthamian Society 2; WILC Assistant Announcer.

GAIL LEWIS

*To make the best better.*

## WITH THEIR MANY PROBLEMS



MARY HELEN RIVENBARK LONG

*Quiet, considerate, with always a smile;  
She's a friend really worthwhile.*

Wilmington College Seatoness 1; Fledgling Staff 1, 2.

BOBBY LUDLUM

*And still they gazed, and still the wonder grew;  
That one small head could carry all that he knew.*

Engineers Club 1, 2 (Treasurer 2); Superlative "Most Intellectual" 2; Wilmington College Chemistry Award 1.



BENNY EARL MALPASS

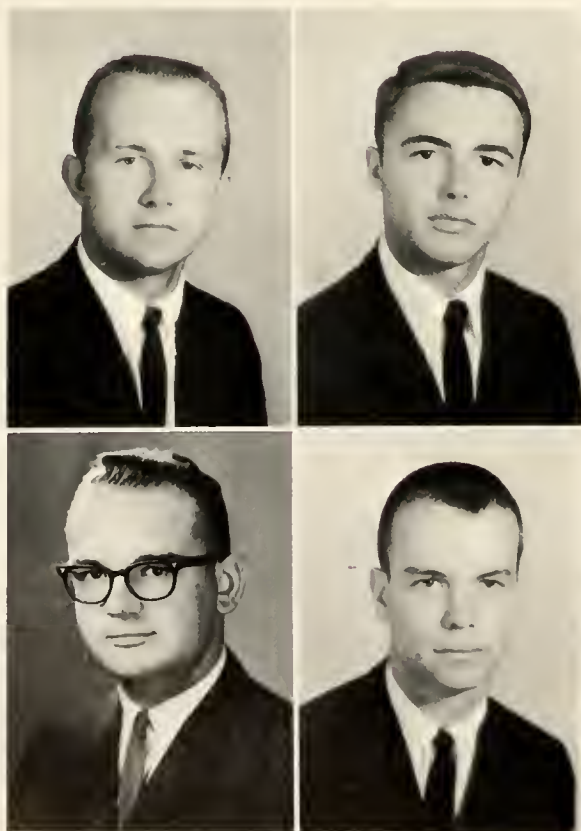
*A probing mind.*

JANE MALPASS

*For softness she has and sweet attractive grace.  
Fledgling Beauty 1; Fledgling Staff 1 (Class Staff); May Court 2 (Sophomore Attendant).*



Students and teachers alike enjoy a favorite past-time.



## FACE FINAL EXAMS

BILL MAULTSBY

*The power to achieve, the will to win.*

EDWARD LEE MAUNEY

*Better to be small and shine than to be large and cast a shadow.*

Sophomore Class President; Cotillion Club 2; Fledgling Staff 2 (Student Photographer); Wilmington College Theatre 2; WILC Broadcasting Service Head Announcer 2; Christmas Dance Committee; Homecoming Dance Committee.

GEORGE McKECUAN

*His work always reflects a well-done task.*

Fledgling Staff 2 (Activity Staff); Pen Pushers 1, 2; Panthamian Society 2.

W. SCOTT McKINNON

*Not too bashful, not too bold;  
Just exactly right, I'm told.*

Circle K Club 1; Wilmington College Golf Team 1; Wilmington College Dance Band 1; Seahawk Staff 1 (Artist); Student Council Artist.

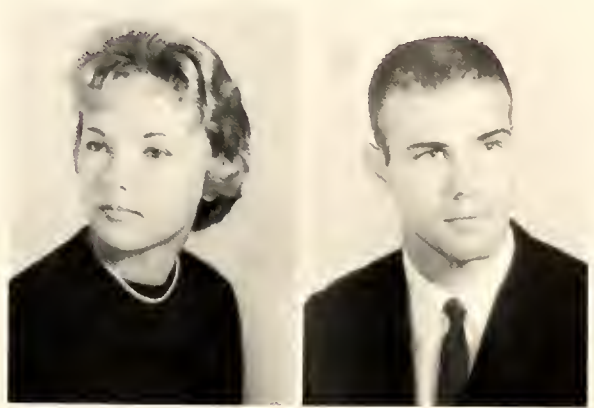
PATTI JOHNS MEADOWS

*By her skill she got many acquaintances;  
And by her sweetness, many friends.*

DAVID KEITH MILLER

*His outstanding ability in athletics is surpassed  
only by his strength of character.*

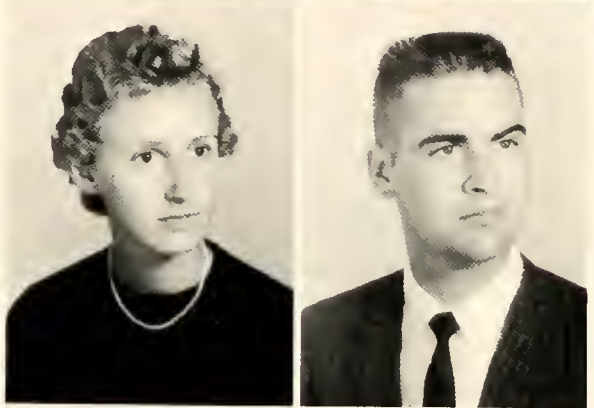
Wilmington College Basketball Team 2; Wil-  
mington College Baseball Team 1, 2 (All-Tour-  
nament Team 1; All-American Team 1).



CLAIRE MILLICAN

*Talkative in speech—witty in ways;  
In our heart she always stays.*

Fledgling Staff 2; Wilmington College Chorus  
1, 2; Biology Lab Assistant.



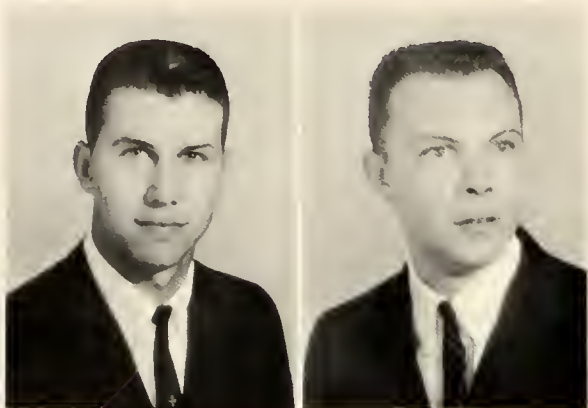
RALPH DELMAR MINCHEW

*He is a fine and likable fellow.*

## WITH VIGOR AND DETERMINATION

A chess game requires the concentration of everyone.



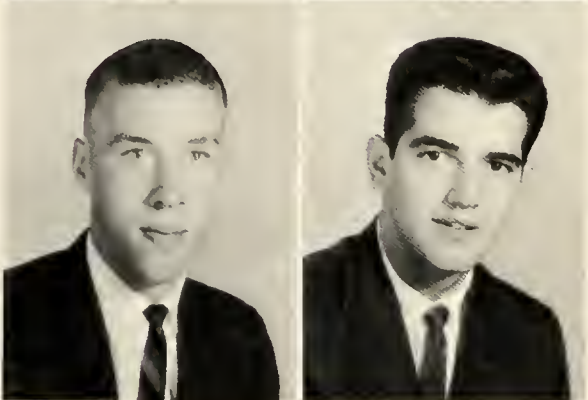


HORACE MURRAY

*Seldom brains and personality are combined;  
Both these in him you can find.*

LINWOOD NEWTON

*Smiles, good humor—no wonder he is well-liked.*



ROLF NIJHUIS

*A good-natured, easy going fellow.*

MERLE EDWIN NORRIS

*His eyes mirror courtesy and truth.*

## BECOME FIRST

## GRADUATING CLASS

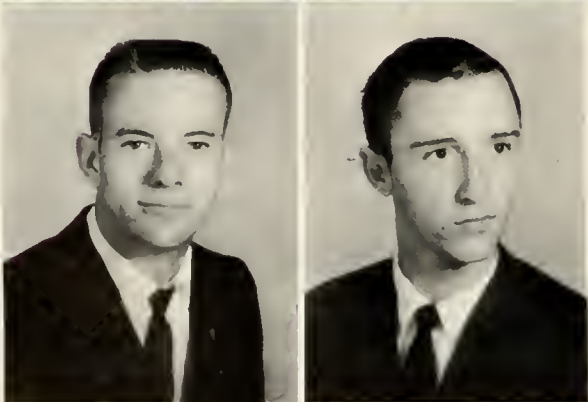


FRANK NYE

*An honest personality can afford many a friend.*

DEWEY PADGETT

*He is happy, carefree, joyous, gay;  
He has good humor and plenty to say.*



ROY PARKER

*He's shy, considerate—one of the best we know.*

CHARLES EDWARD PEARSALL, JR.

*The understanding to direct and the hand to execute.*

Engineers Club 1, 2 (Co-chairman of Homecoming Parade).

JO ELLEN PETERSON

*Good nature is her currency and a smile her coin.*

NORMAN PHIPPS

*He strives to reach man's highest goals.*



GRAHAM PICKETT

*Quietness marks the mannered man.*

JOHN PISTOLIS

*Machines move mountains, but initiative moves men.*

Freshman Class President 1; Vice-president of Student Council 2; Social Committee Chairman 1; Assistant Chairman of Elections 1, 2; Homecoming Chairman 2; Circle K Club 1; Superlative "Best Dressed" 2.



## OF NEW SCHOOL

BETSY PONS

*Cheerful, gay, full of fun;  
She's a friend of everyone.*

SARAH POWELL

*Sweet, shy, and always a friend.*



JOE REGISTER

*Never has a worry, it would seem.*

VERTA RHODES

*Dark hair, dark eyes, lovely complexion;  
Her charming voice has won our affection.*



RADFORD RICH

*An easy laugh, a smiling face;  
A boy who fits in any place.*

WILLIAM A. ROGERS

*His thoughts must truly be peaceful ones.*

RITA JOY SAPP

*Willing worker—full of mirth;  
We need more like her on this earth.*

Pen Pushers 1, 2 (Recording Secretary 2, Chairman of Constitutional Committee 2); Homecoming Court 1; Faculty Secretary 1, 2; *Fledgling* Staff 1, 2 (Activity Editor 1); Sophomore Class Representative 2; Dance Committee 1; Cotillion Club 2; Superlative "Most Intellectual" 2; Wilmington College Theatre 1, 2 (Co-Business Manager, Program Committee, Carolina Drama Festival, Straw Hat Theatre, Beaux Arts Ball Committee 1).

ANTHONY SCHLEGEL

*His aims are high, up to the sky;  
He's never satisfied with just getting by.*

# LEAVE WILMINGTON COLLEGE

MICHAEL L. SELLARS

*A disposition that's hard to dismay.*

ANDY SONDEY

*Though you may not know him but a span,  
You know you've met a mighty pleasant man.*

PHIL STEPHENSON

*Quiet on the surface, but looks deceive;  
He's really full of mischief, so we believe.*

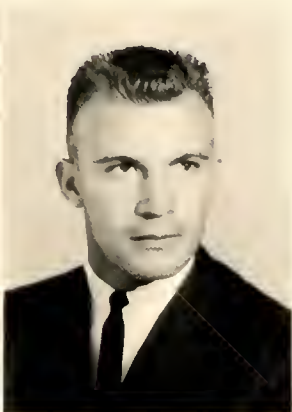
Wilmington College Basketball Team 1, 2; Wilmington College Baseball Team 1, 2.

JAMES R. STRICKLAND

*A hearty laugh, a mischievous smile;  
Makes for him a life worthwhile.*







TOMMY TAYLOR

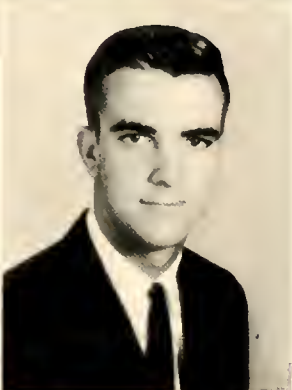
*Every man is a volume, if you know how to read him.*

Engineers Club 1, 2 (Vice-president 2).

WAYNE TAYLOR

*Good looks and talent are not everything, but they do help.*

Wilmington College Baseball Team 1, 2 (All-Tournament Team 2).



MIKE TODD

*Happy, contented, he jogs along.*

MITCHELL TODD

*He thinks to come to school would be coming to school much too soon.*

Fledging Staff 1, 2, (Sports Staff).

## WITH FOND MEMORIES



TOMMY TUTTLE

*You show good sense by controlling your senses.*

CHARLES UPCHURCH

*Victory belongs to the most persevering.*



JAMES VAUGHAN

*People like this make life brighter.*

OLIVER VESTAL

*A wit that takes you by surprise.*

WILC Broadcasting Service Engineer 2; Circle K Club 2; Student Council Canvas Chairman 2; Wilmington College Chorus 1, 2 (Top Twelve 2); Wilmington College Theatre 2.



College students?

## BECOME A PART



ALICE WADSWORTH

*The deepest rivers flow with the least sound.  
Fledgling Beauty 1.*

LINDSEY FRANKLIN WALKER, JR.

*Common sense is the best indication of a sound mind.*

Engineers Club 1, 2 (Co-chairman of Homecoming Parade 2).



ELIZABETH ANN WARD

*Youth comes but once so I'm enjoying mine.*

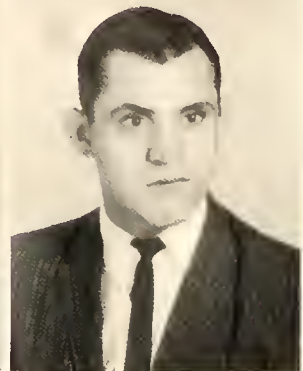
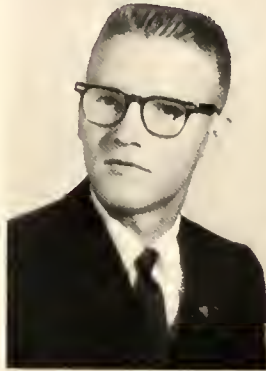
*Fledgling Staff 1 (Assistant Editor); Seahawk Staff 2 (Business Manager); Hostess for Dedication Service 2; Superlative "Most Original" 2.*

DOUGLAS WATTS

*Kind words are the music of the world.*

BOBBY WHALEY

*Jolly, but not too gay—good sense, but not too studious.*

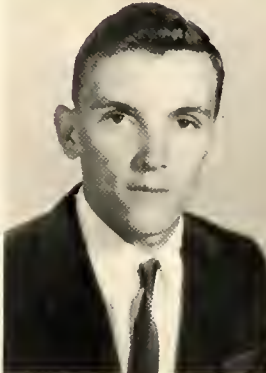


DANNY WHITE

*He tried the luxury of doing good.*

HAROLD WILLIAMS

*They live most at ease that have the world at will.*



SANDRA WILLOUGHBY

*The world looks to one who can express herself in music.*

Wilmington College Chorus 1, 2 (Accompanist 1, 2); Superlative "Most Talented" 2.

## OF THE COLLEGE HISTORY

"Now this is the way to do it."





Dr. William M. Randall, President of Wilmington College, speaks in the dedication service in the Library Building.

## COLLEGE CAMPUS . . .

Mr. Fred Vallianos practices the theory of teaching students in their own level.





The ice-covered campus provides a very infrequent game for the students.

The ice on the pine needles of the campus seems unusual, but impressive.

## CENTER OF VARIED ACTIVITIES

Mrs. Mary Bellamy, Duncan P. Randall, Thomas Gay, and Miss Sondra Wilson stop for a discussion during the Open House at Wilmington College.



The WILC Student Broadcasting room slowly grows.





The 1961 May Court is honored at the May Dance: Freshman Attendant, Miss Genie Goodman with escort Lank Lancaster; Miss Julia Rochelle, Sophomore Attendant, and Ronald Hutchinson; Miss Martha Bordeaux,

Maid-of-Honor, and Don Honeycutte; Miss Carol Hewett, May Queen, and Paul Butler; Miss Judy Avery, Sophomore Attendants, and Buck O'Shields.

## HIGHLIGHTS OF 1961 . . .

Miss Pat Moore, Freshman Attendant, and Wilbur Brown.



The importance of a year's work is always noted at the end of the year. The qualities of the classes can be looked back upon just as the students look back over the memories and wonder how they managed to do all that they did and still graduate. The May Dance, the Azalea Festival, and the National Junior College Baseball Championship—events that will never be forgotten by the class of 1960-61.

Tommy Cromartie crowns Miss Carol Hewett as Wilmington College May Queen for 1961. Tommy was Vice-president of the student body of 1960-61. As May Queen, Miss Hewett participated in the Azalea Festival as a Southern belle.

# FOND MEMORIES



David Miller was one of the outstanding freshmen in 1961. David was named to the All-Tournament team in baseball and All-American shortstop.



Wayne Taylor was named to the All-Tournament team for his superior skill in the position as catcher.



The Most Valuable Player award went to Wilmington College's Ronnie Durham. Ronnie led the Seahawks to victory with his pitching.

The male students of Wilmington College also participated in the Azalea Festival as confederate soldiers. The men were escorts for the college queens and appeared in the services held at Fort Fisher as shown here.





The past generations are reflected in the costumes of Miss Susan Hale and Oliver Vestal for use in "Family Affair."

## THE BUSY LIFE . . .

Frank Walker's contribution to the Homecoming Parade could be termed as a petite one. (The rope was used for hitching a ride when the cart broke down in the middle of the parade.)







Misses Rita Sapp, Martha Jay Staton, Barbara Brodnax, and Mary Henderson serve as hostesses for the dedication services in the fall.

## OF A COLLEGE STUDENT



College work is so hard!



The WILC Sweetheart, Linda Hancock, poses before the beginning of the parade.



The officers of the Freshman Class of 1961-62 are Charlotte Taylor, representative; Barbara Singletary, secretary; second row, Nancy Bradshaw, representative; Nat Bost, vice-president; and Terry Horton, president.

## THE FRESHMAN CLASS . . .

The Student Council officers for 1962-63 are Nat Bost, president; Kay Wells, secretary; and Millie Stone, vice-president.



The Freshman Class of 1961-62 entered Wilmington College amid an air of confusion and anticipation. Not only was this their first days of college life, but this was the first freshman class of the new campus of Wilmington College.

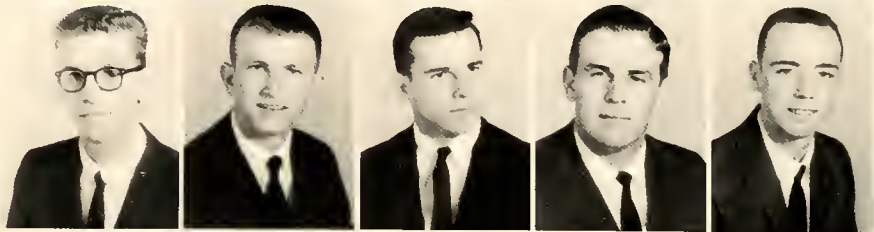
The students became acquainted with the newness of college just as the campus became acquainted with them. Organization became a watchword among the students, for their progress became parallel with the progress of the school and campus. Formation of clubs and various activities fell upon these students in the same manner as the beginning years of the college in Wilmington.

This first "wearing in" of the campus can never be redone, but it must remain in the history of the school. This history now becomes a part of the history of Wilmington.

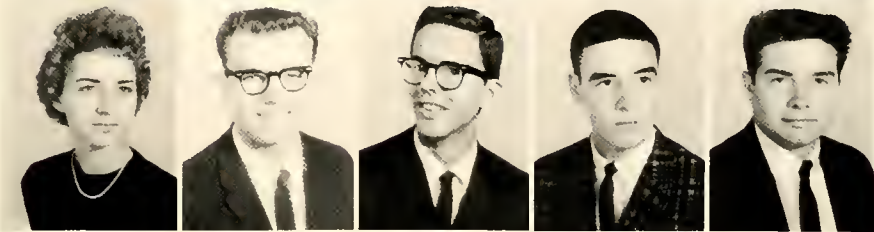
Evelyn Adkins  
 Charlene Anderson  
 Betty Aranow  
 Joe Ashley  
 Tommy Baldwin



Gerald Barefoot  
 Michael Wayne Barton  
 Bernard Bass  
 Jessie E. Batson  
 Bobby Baxter



Gloria Baysden  
 Larry Beal  
 Jerry Benton  
 Ricky Berman  
 Jerry Bizzell



## IN COLLEGE AT LAST

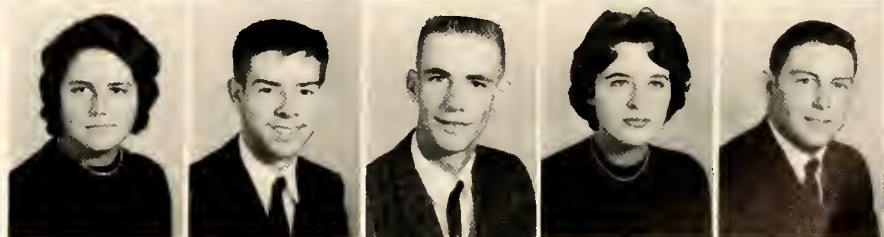
Loretta Blake  
 Lillie Bloodworth  
 Eugene Bogash  
 Wayne Bolick  
 Nat Bost

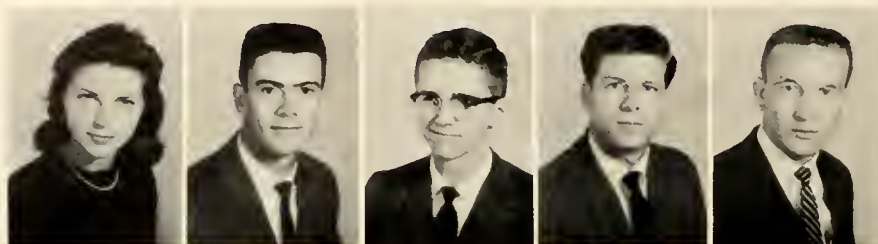


Bob Bowden  
 Nancy Bowden  
 Barbara Ann Bradley  
 Nancy Bradshaw  
 Jessibeth Brady



Madeline Brite  
 Deford Brown  
 Perry Burchette  
 Sarah Burgess  
 John Earl Burns

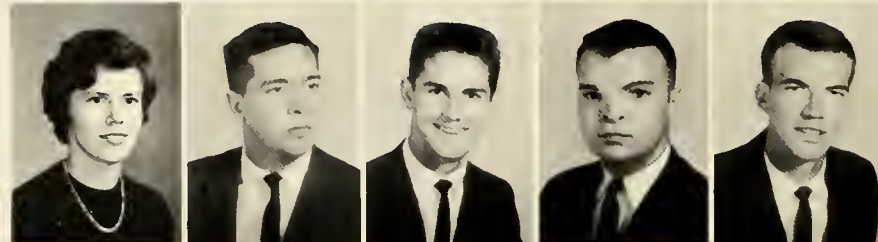




Judy Burress  
 Harry Buzzell  
 Douglas Carmichael  
 James D. Capps  
 Otis Capps



Doris Jean Carney  
 Nancy Cavanaugh  
 Pam Chason  
 Larry Cheek  
 Steve Coley



Betty Lou Collins  
 Bill Collins  
 Grady Conner  
 Al Corbett  
 Jack Corbett

## PROUD TO SPONSOR



Tommy Corbett  
 Kay Counts  
 Thomas Covil  
 Charles Croom  
 Steve Culberth

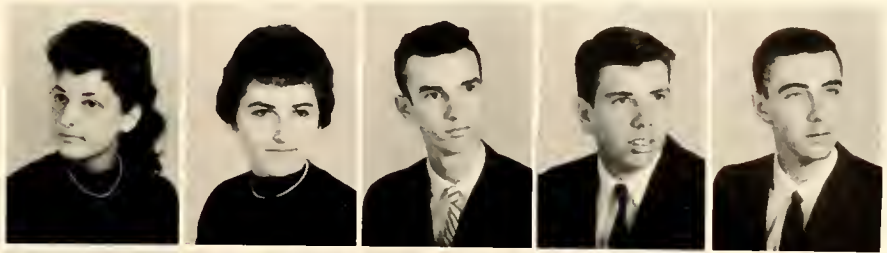


Ann Davis  
 Frances Davis  
 Bryan Dawson  
 Richard Douthewaite  
 Judy Driggers



Johnny Eakins  
 Roscoe Eakins  
 Sarah Eakins  
 Jerry Eason  
 JoAnne Elekes

Carol Ellis  
 Laura Ellis  
 Buddy Ennis  
 Thomas G. Evans  
 Franklin Fales



Norman Farmer  
 Jeanne Ferger  
 Ann Ferguson  
 Mike Fitz  
 Randy Foster



Vicky Fountain  
 Jerry Fulcher  
 Elsie Frost  
 Barbara Fulford  
 Marcia Gardner



## FRESHMAN DANCE

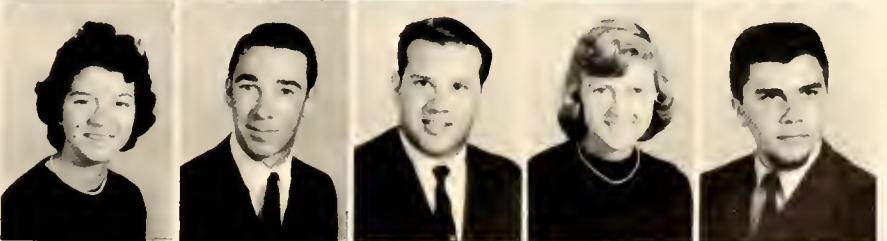
Garland B. Garrett  
 Mary Gilliland  
 Milton Gerock  
 William Godbold  
 Eddie Godwin



Carol Gray  
 Len Habas  
 Susan Hale  
 Kenneth Hansley  
 James Hall



Margaret Hansen  
 Jack Harrell  
 Lesley Harris  
 Vivian Harris  
 Charles Harrison





"Jimmy" Yavari, freshman from Iran, straightens the limbs of the Christmas tree.



The Freshmen enjoy the lounge, their favorite classroom.

## FRESHMAN ACTIVITIES . . .

The Wilmington College fans answer the "Who's winning?" cheer at the Louisburg—Seahawk game in Louisburg, North Carolina.





The first Orientation Program to be given in the Student Lounge will be remembered for a long time.



The familiar walk between the campus "deserts" makes a bleak picture.

## 1962 HIGHLIGHTS

Kenneth Stanley gives his campaign speech in seeking a Freshman Class office.



Freshmen quickly learn that Registration Day can be long and tiring.

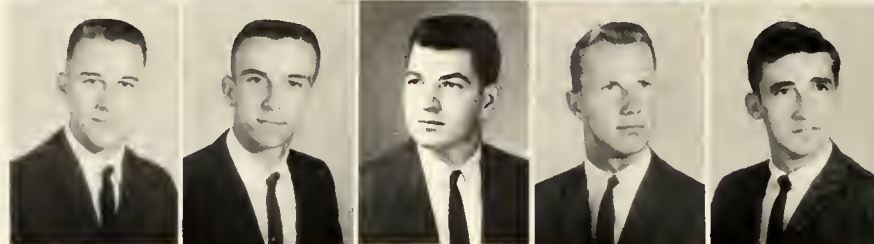




Phyliss Hazel  
 Mary Henderson  
 Nancy Hendrix  
 Ed Herring  
 Carol Hewett



Carl Hiatt  
 June Hill  
 Barbara Ann Hixon  
 Janet Hobbs  
 James E. Holladay

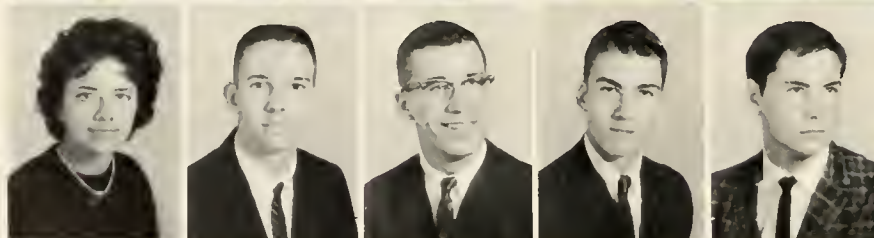


Wayne Holley  
 Robert Jerome Hooks  
 Donnie Hope  
 Terry Horton  
 Tommy Howell

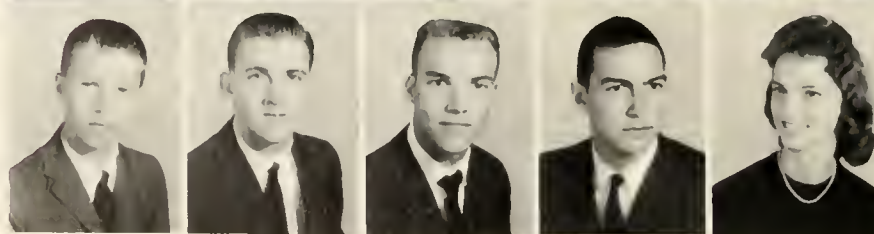
## PARTICIPATION IN



David Huggins  
 Bobby Humphrey  
 Franklin E. Jewell, Jr.  
 Elizabeth Johnson  
 Mildren Johnson



Sheral Johnson  
 George Jones  
 Eugene Jordan  
 Bert Keeble  
 Tommy Kelly



David King  
 Acie Kinlaw  
 Glenn E. Kye  
 Bill Lanier  
 Marie Lassiter



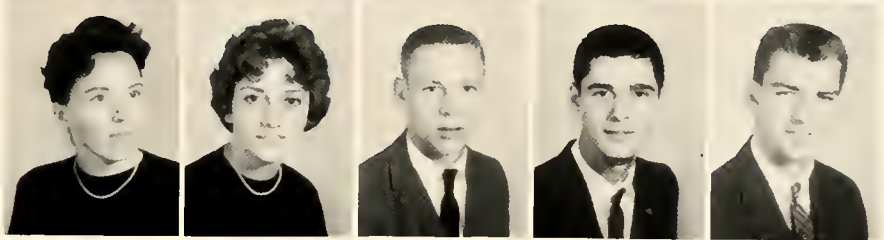
Joanne LeGwin  
 Frances LeNeave  
 Glenda Lennon  
 Diane Lewis  
 Jackie Lewis



John Lewis  
 Lawrence Lewis  
 Mary Ruth Lewis  
 Ruth Lewis  
 Steve Lewis

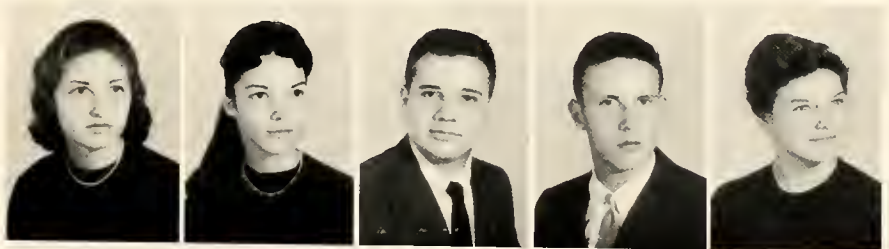


Betty Long  
 Nancy Lucas  
 James Malpass  
 Thomas Maryscuk  
 Bill Mathis

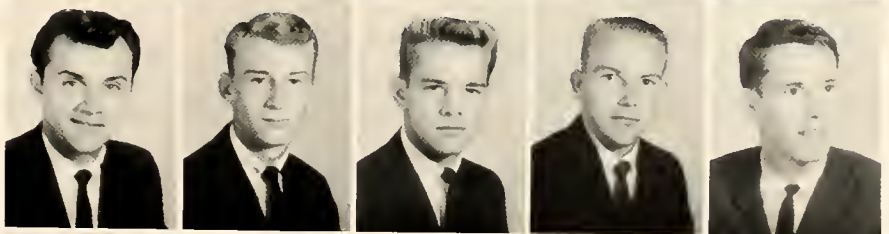


# STUDENT GOVERNMENT

Betty Matthews  
 Judy Matthews  
 Cage Mattocks  
 Edward White Maultsby, Jr.  
 Linda McDonald



Kenneth McDonald  
 Andy McIntosh  
 Gilbert McLemore  
 David McLendon  
 Charles Menefee



Jenny Merritt  
 Jo Ellen Merritt  
 Kenneth Mills  
 Tim Moore  
 Frank Montgomery





Erin Neblett  
 Arnold W. Norris  
 Ray Oxedine  
 David Padgett  
 Bonnie Page

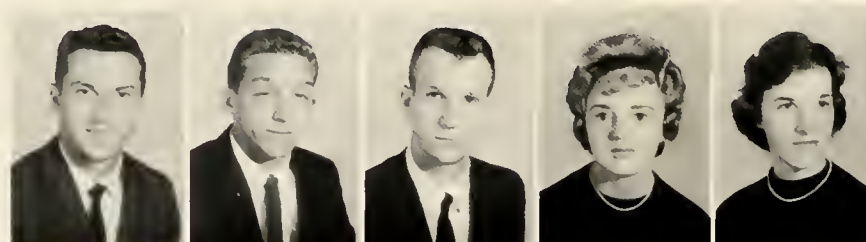


Sam Page  
 George Parker  
 Martha Parker  
 Ray Parker  
 Hugh Paschal



Pat Paxton  
 Janice Peele  
 Allen James Pennington  
 Johnny Peterson  
 Iris Pickler

## FIRST EXPOSURE TO



Glenn Piver  
 Ace Potter  
 Jerry Pridgen  
 Bonnie Raines  
 Sybil Rich

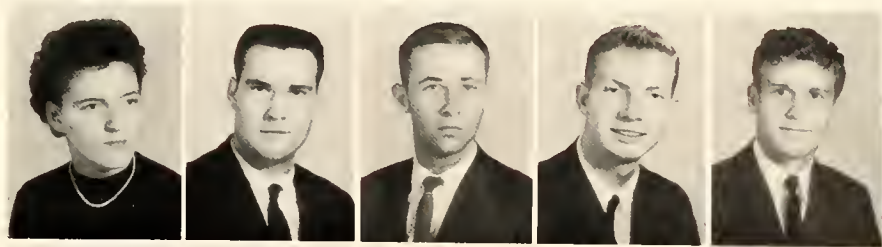


Harry Rickenbacker  
 Bobby Roberts  
 Cheryl Robertshaw  
 Jimmy Rochelle  
 Robert Rogers



Hilda Rooks  
 Jewell Royal  
 Cliff Ruark  
 Doshier Ruark III  
 Sid Salling

Betty Lou Sanderson  
 Billy Savage  
 George Savage  
 Louis Sawyer  
 Jimmy Sloan



Barbara Singletary  
 John Smith  
 Candy Speere  
 Kenneth Stanley  
 Martha Jay Staton

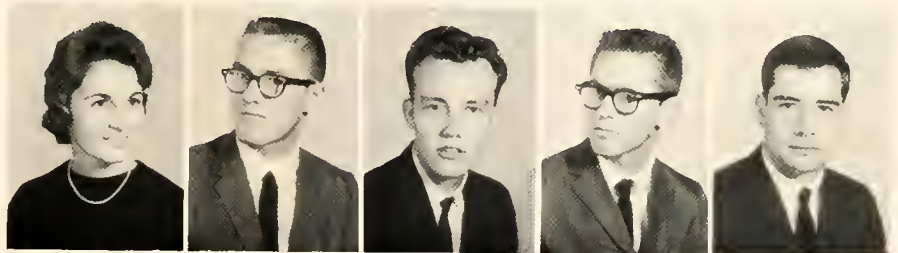


Bob Stephson  
 Robert Stewart  
 Pat Stiles  
 Milly Stone  
 Gene Strickland

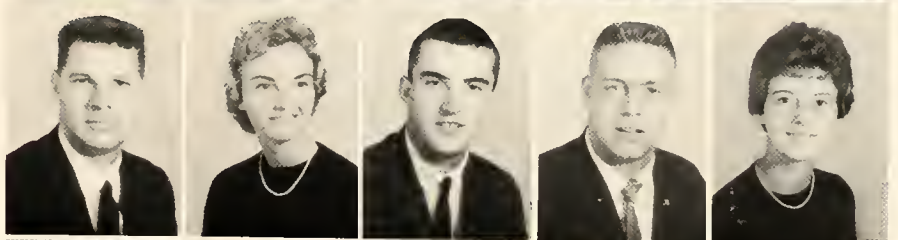


## QUIZZES AND CUTS

Gennell Sugg  
 Allen Sullivan  
 Carl Sullivan  
 Harold Sullivan  
 Phillip L. Sullivan



Jack Sumner  
 Charlotte Taylor  
 Johnny Taylor  
 James Teachey  
 Joyce Teachey



Patsy Teachey  
 Franky Thomas  
 Ellen Tomz  
 Reginald Tucker  
 Harold Tysinger

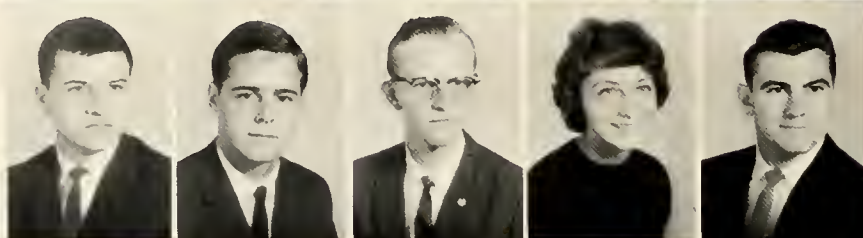




Charles Upchurch  
Doug Ward  
Everett Keal Ward, Jr.  
Wesley Ward  
Michael Barton Warren



Helen Webb  
Kay Wells  
Edward Wessell  
Wallace West  
Gloria Jean Westbrook



David Williams  
Stanley Willis  
Arlie James Wilson  
Sondra Wilson  
David Franklin Woolsey



Jane Wooten  
Stella Vdorick  
Lionel Yow

# OVERCOME RESPONSIBILITIES

The first Registration Day for the freshmen is a very puzzling and tiring day.



Rehearsals for the plays at Wilmington College may become hectic, but the lines are learned.

Jim McCurdy is one of the outstanding freshmen on the basketball team.



The Top Twelve perform for the assembly program in the Student Lounge.





The officers of the Freshmen Nurses are, front row, Mary Richardson and Mary Elizabeth Merritt; back row, Martha Kaye Brown and Janice Henderson.

## FRESHMAN NURSES . . .

The chemistry lab period begins with instruction on use of chemicals and results to work toward.



The Freshman Student Nurses of James Walker Memorial Hospital are also students at Wilmington College during the autumn and winter quarters. They come several mornings each week to take anatomy, physiology, chemistry, and microbiology. At the hospital the nurses are taught by various doctors and nursing instructors. During their junior and senior years, they are taught again by Wilmington College professors. This time they study such subjects as sociology and psychology.

Student nurses have hard, busy schedules, but the ones at James Walker still find time to have fun. Their recreation includes wiener roasts, talent shows, and even an occasional ballgame on the beach. The freshmen are also allowed to have every weekend off.

One of the highlights of their senior year is the three months' training that all of the nurses receive at the State Hospital in Raleigh.



Dawna Bland  
Betty Bradshaw

Brenda Broughton  
Martha Brown

Betty Bullard  
Billie Burney

Mary Jo Dempsey  
Bette Green

Jean Hall  
Janice Henderson

# LEARNING TO HELP

Barbara Jones  
Joyce Ponder

Mary Richardson  
Diane Smith

Lynda Sullivan  
Joan Wall

Christian Ward  
Judith Williams

Angeline Wooten  
Linda Wright  
Maxine Zandey





# WE PARTICIPATE

The activities of a period in time indeed tell the story of the people living then. The Sunday afternoon picnic was a popular activity among young people such as these. A picnic was an event for celebration or for mere hobby. The basket, filled with homecooked delights, was usually raided after a butterfly chase or a game of croquet.

The young people of Wilmington had similar activities, but they enjoyed many different hobbies due to the varied climate. Of course, there was an old swimming hole for the daring even though the Atlantic Ocean beckoned to many in the warmer season. Carriage races, horse shows, and stage shows have played important parts in the growth of the port city.

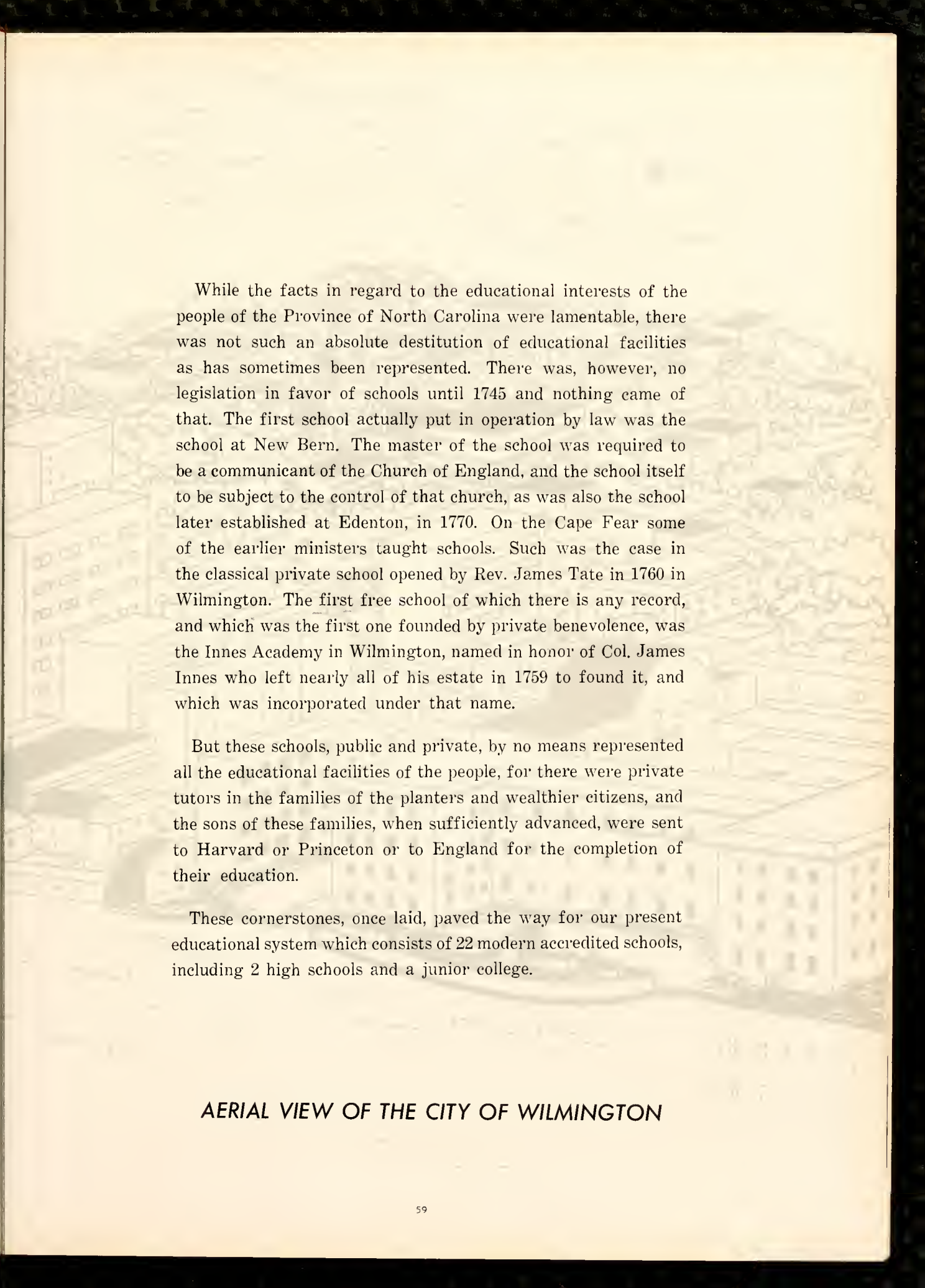
Activities are a necessity in the organization of any project. The beginning classes of the school were composed of a limited number of members, but with the maturity of the college with the enlargement of the classes, a need was created for varied activities.

Thus, the many clubs and organizations of Wilmington College are important factors in the expansion of the school, its prestige, and its changing members. This section includes the student organizations.









While the facts in regard to the educational interests of the people of the Province of North Carolina were lamentable, there was not such an absolute destitution of educational facilities as has sometimes been represented. There was, however, no legislation in favor of schools until 1745 and nothing came of that. The first school actually put in operation by law was the school at New Bern. The master of the school was required to be a communicant of the Church of England, and the school itself to be subject to the control of that church, as was also the school later established at Edenton, in 1770. On the Cape Fear some of the earlier ministers taught schools. Such was the case in the classical private school opened by Rev. James Tate in 1760 in Wilmington. The first free school of which there is any record, and which was the first one founded by private benevolence, was the Innes Academy in Wilmington, named in honor of Col. James Innes who left nearly all of his estate in 1759 to found it, and which was incorporated under that name.

But these schools, public and private, by no means represented all the educational facilities of the people, for there were private tutors in the families of the planters and wealthier citizens, and the sons of these families, when sufficiently advanced, were sent to Harvard or Princeton or to England for the completion of their education.

These cornerstones, once laid, paved the way for our present educational system which consists of 22 modern accredited schools, including 2 high schools and a junior college.

## AERIAL VIEW OF THE CITY OF WILMINGTON



The President of the Student Body of Wilmington College for 1961-62 is Jim Hudgens. Facing his job with determination and new ideas gave this president the title of "leader."



John Pistolis, Vice-president of the Student Body lends government experience to help lead a successful year.



Elected Secretary, Miss Frances Best has a tedious job of minutes and correspondence.

## STUDENT COUNCIL . . .

The members of the Student Council of Wilmington College are Stacy Covil, Sophomore Representative; John Galloway, Vice-president of the Sophomore Class; Al Shew, President of the Cotillion Club; James Cotton, Chairman of Elections; Frances Best, Secretary; Jim

Hudgens, President; John Pistolis, Vice-president; Ed Mauney, Sophomore President; Gennell Sugg, Freshman Class Representative; Rita Sapp, Sophomore Representative; Barbara Singletary, Freshman Secretary; and Terry Horton, President of the Freshman Class.





Mr. Walter C. Biggs serves as advisor of the Student Council.



The Student Council sponsors assembly programs such as this Christmas program of music by the Wilmington College Chorus under the direction of Mr. Loyd Hudson.

## ELECTED TO LEAD

The members of the 1961-62 Student Council of Wilmington College were chosen to lead the student life and to coordinate the activities. The new campus is the pride of many, but it presents the task of organization.

The parking situation became the first of the problems overcome by the Student Council. The grass must be protected; therefore, members issue parking tickets for illegal parking.

Obtaining ash trays, door mats, checker and chess sets, cards, and book racks for the Student Lounge became a project of the Campus Committee.

Informal dances have proven to be popular among the students. The WILC Broadcasting Service became a separate committee due to its growth.

Conducting student body elections is another important task of the Student Council.

Each year, the Student Council sponsors Homecoming Week-end. This consists of parade, bonfire, game, and dances.

The Suggestion Box and Poll Committee combine to inform the Student Council of the needs of the student body.

The WILC Student Broadcasting Service began as a project of the Campus Committee of Student Council for providing a method of announcing important bulletins and the music that students like to hear. A separate committee now, it is headed by Ed Mauney, head announcer; Oliver Vestal, chief engineer; Frank Rogers, station manager; and Mary Gillilan, secretary.





The President of the Cotillion Club relaxes at one of the dances with Anne West and Charlotte Taylor while Charlotte's date takes pictures.

The Cotillion Club began its operation late in the school year of 1961-62. The dances of the college were organized by a committee of the Student Council, headed by the Chairman of Social Affairs who was appointed by the president. The chairman who was appointed in 1961 was Al Shew, a second year student of Wilmington College.

The committee, under Al Shew, began to grow and create interest in socials among the students on campus. The need for building school spirit became satisfied by uniting the school through social functions. This factor combined with the necessity of handling trivial matters of concern to dances outside of Student Council meetings to instigate the question of a charter for a dance club.

The Cotillion Club is made up of the members of the Student Council and three representatives from each class. The meetings are for the purpose of planning the dances for a report to the Student Council.

## ORGANIZATION OF DANCES

The President of the Cotillion Club, Al Shew, confers with some of the members of the club on the choice of records for the dances. These members are Terry Horton,

Gennell Sugg, Hilda Rooks, Al, Barbara Singletary, Ed Mauney, Jim Hudgens, and Tommy Landen.





Mrs. Dobson, Anne West, and Doug Hunt give a memorable performance in the temporary drama room of Hoggard Hall. These scenes are from "Medea", under the direction of Mr. Doug Swink.



"I'll explain it to you one more time, and that's all!"

# DRAMATICS OF WILMINGTON COLLEGE

Medea, Anne West, looks for inspiration to give her strength to carry out her evil acts.



# ENGINEERS CLUB . . .



Bob Ludlum, treasurer; Tommy Taylor, vice-president; Kenneth Hansley, president; and Charles Barnhill, secretary, form the executive committee of the Engineers Club. These members are responsible for the projects and services of the group.

The advisors of the Engineers Club, on the left couch, are Mr. Rolla Nelson, Mr. Calvin Doss, and Mr. Fred Toney. Seated with them is Kenneth Hansley, president of the club. Miss Judy Hayes, Engineers Club Sweetheart, is sitting with Tommy Taylor. Next to them are Charles

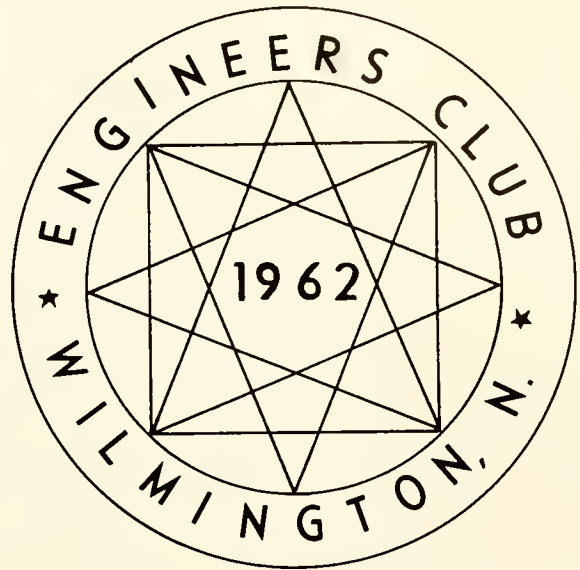
Greer, Charles Barnhill, Bobby Ludlum, and Frank Walker. The other members of the club, standing, are Thomas Maryscuk, Richard Douthewaite, Thomas Evans, Graham Kenan, John Galloway, Bobby Whaley, Edward Pearsall, Charles Blizzard, and Michael Cushman.







The engineers take time out from preparing drawings and solving curvatures to charcoal hamburgers and display musical talents.



## SERVICE CLUB

Miss Judy Hayes, club sweetheart, proves that engineering can be very interesting.



The Engineers Club was formed to promote interest among the students in all aspects of engineering. Under the advice of Mr. Calvin Doss, Mr. Fred Toney, and Mr. Rolla C. Nelson, the members participate in both scholastic and civic activities.

The Engineers Club organized the parade for the Homecoming Week-end of Wilmington College. The members also spent many afternoons collecting wood for the bonfire.

The club holds monthly meetings at which time guest speakers keep the club informed on the latest engineering practices and developments. The group also conducts tours to interesting places such as Fort Fisher Air Force Base in order to see engineering principles in practical application.

Dinner meetings and socials also fill the agenda. The sale of Wilmington College pins is an important project of these students.

Promoting interest and providing help to the school makes this club the service club of the college.



Mr. Larry Ingle, Assistant Professor of Social Sciences, is the advisor of the society.

The Panmathan Society is the first of its kind at Wilmington College, being organized in the fall of 1961. Its organization was brought about to help fulfill the need of the new campus for a variety of interest to the students.

The meetings of the Panmathan Society provide the students and faculty with a place for discussion and debate. These meetings are begun with a speaker or speakers, and it usually ends with a conversion of one point of view or with an equal number of supporters for each side.

Subjects discussed at these meetings range from religion to politics. "Operation Abolition" was shown to the members and visitors at one of the more interesting meetings. A newly converted Republican also created an evening of intense interest.

## PANMATHAN SOCIETY





Bob Hinson makes a move cautiously as Mary Ann Batson studies the board.



"Now what will this lead to?"

## WILMINGTON COLLEGE CHESS CLUB

The Wilmington College Chess Club was formed in the winter of 1961 for the purpose of providing students with a place for learning and improving the popular game. This club is one of the new clubs in the history of Wilmington College, created to help interest the students in their school and its activities.

The meetings of the Chess Club are held weekly, and the entire evening is devoted to playing among the members. Advice is given to them from the club officers and advisors.

A chess team is sent to other schools such as North Carolina State College for competition. The chess champion of North Carolina also makes the meetings interesting with his advice.

Joe Glover demonstrates the various moves of good chess playing.



# WILMINGTON COLLEGE CHORUS . . .



Mr. Loyd Hudson, director of the Wilmington College Chorus, teaches the fundamentals of music while instructing the group in different musical arrangements. Mr. Hudson received his BME from Drake University and his MM from Indiana University.



Miss Sandra Willoughby is the accompanist of the College Chorus. Sandra has held this position for two years, and she is majoring in music.



# LOVE OF MUSIC

The Wilmington College Chorus is composed of freshmen and sophomores who elect the course for the three days each week. Mr. Loyd Hudson is the director of the chorus and teaches the group different arrangements for performances and knowledge.

During the Christmas season, the singers per-

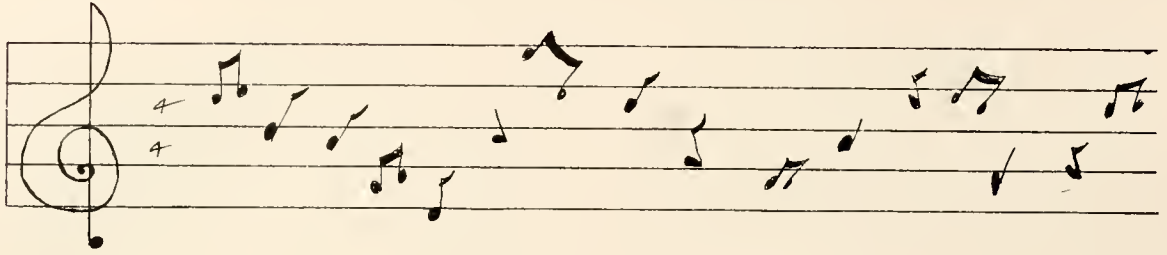
form on television and for various civic groups of Wilmington. The chorus also has a Top Twelve who sing for special occasions when the entire group cannot.

The Wilmington College Chorus adds to the student body activities when they perform in assemblies in the Student Activity Building.



*First row, Joan LeGwin, Carol Ellis, Marcia Kalfeltz, Barbara Bradley, Judy Driggers, Iris Pickler, Judy Kerr, Sandra Willoughby; second row, Elaine Gregory, Marcia Gardner, Sarah Eakins, Betty Aranaw, Judy Counts, Dian Lewis, Helen Connelly; third row, Kenneth McDowell,*

*Randy Coble, Doug Hunt, Jay Fisher, Barbara Fulford, Mary Lewis; fourth row, Wallace West, Jan Williams, Doshier Ruark, David Stanley, Oliver Vestal, Wayne Holly, Jim Hudgens.*



## WILMINGTON COLLEGE BAND . . .



Mr. William Adcock serves as the director of the Wilmington College Concert Band. Versatile in instruments, Mr. Adcock instructs the members of the band efficiently. This band director is also the director of the high school band in Wilmington.



In position for their weekly practice are the members of the Wilmington College Concert Band, *first row*, Barbara Bradley, Jack Dunn, Burt Keeble, Bob Bowden, Donnie Hope, Bill Rogers; *second row*, David Huggins,

Jimmy Cook, Freddie Newber, Tommy Landen, Gerald Barefoot, Wallace West, Jimmy Furr, and Richard Doute-waite.

## SYMPHONIC AND DIXIELAND

A practice session of the band demands that the members give up lunch hours in order to perfect their musical talents.

The Wilmington College band, under the direction of Mr. William Adcock, is attempting its first year as a concert band. Around twenty members give up their lunch hour to engage in their favorite pastime while adding to the number of activities of the college.

In addition to lining up concerts, the band plays dixieland music for the Homecoming bonfire. The members march in the Homecoming parade also, adding the most necessary factor of a parade.

With this beginning of the Wilmington College Concert Band, its growth is expected to parallel the growth of Wilmington College.





Miss M. Shannon Morton serves as the advisor of the Pen Pushers.

## 1962

The proper smile  
 The right hello  
 The Perfect dress  
 With personality lost in oblivion  
 And the status symbol.

On Studies

Dum de dum de dum  
 Scratch, scratch, scratch  
 Hummm-m-m  
 Damn this math is hard!

—WTL

# PEN PUSHERS . . .

The members of the Pen Pushers Club give their attention to the advisor, Miss Shannon Morton, as she explains an important aspect of creative writing. Seated are Rita Sapp, Maurice Broadwell, Beth Fineburg, and Jimmy Yavari. The other members are Sondra Wilson, Tommy Landen, George McKeuen, Ritchie Watson, and Frances Best.





The Pen Pushers Club tries to create interest among students in developing their writing abilities and, by expressing opinions on other authors, learn more about the styles of creative writing. The members bring in their work for discussion and criticism.

Many of the meetings are centered around guest speakers who explain different methods for improving their works. Some of these speakers are members of the faculty, but many of them come from publications in Wilmington who have worked with the practical application of creative writing.

Miss M. Shannon Morton, the faculty advisor, ably assists the students in their writing and helps explain the many intricacies of writing. In the spring, the club publishes the *With Pen In Hand*, a literary magazine of the work of the students of Wilmington College.



The girls who went to New York City on the Christmas holiday trip sponsored by the Pen Pushers pose in the lobby of the hotel. Anne West, Beth Fineburg, Doris Hardison, and, seated, Barbara Brodnax and Elaine Gregory brought the members interesting tales of the northern tourist attraction.

## ADVENTURE IN



Keeping alert for good stories, Sondra Wilson serves as co-editor of the *With Pen In Hand*.

## WRITING

As president of the club, Tommy Landen's eccentricity makes him an excellent leader.



Rita Sapp's secretarial experience aids her in taking the minutes of the club's meetings.



John Pistolis arranges hats in a local men's clothing store.



Danny White takes up tickets in a local theater.



Norman Phipps also works in a clothing store.

# WILMINGTON COLLEGE

# MERCHANDISING CLUB



Mr. W. K. Dorsey, Instructor in Retailing, is the club advisor.

The Wilmington College Merchandising received its charter from the Student Council in the fall of 1961. This group has begun with a few members under the advice of Mr. W. K. Dorsey.

The purpose of the club is to create interest among the students in the art and skill of retailing. The club members take part in work in downtown Wilmington. Their part-time work adds interest in Wilmington College students and aids its prestige.

Club meetings are held in the classes of retailing and outside. Club projects are for the betterment of Wilmington College and Wilmington.

Officers of the club are Bill Cunniff, secretary, Norman Phipps, president, James Strickland, treasurer, and John Pistolis, vice president.

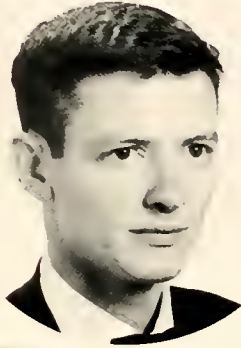




Ed Freeman



Ronald Lee



Tommy Landen

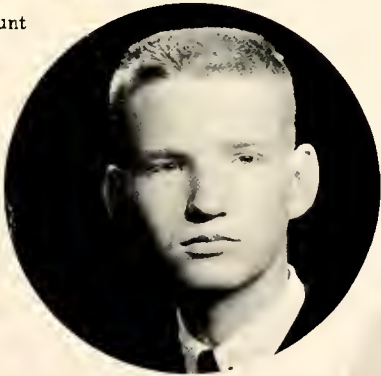


Doug Hunt

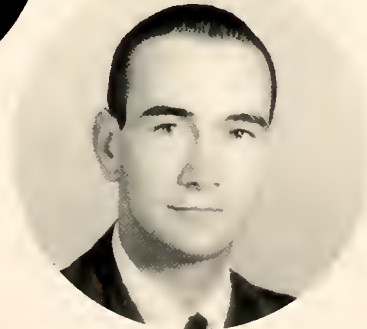
# CIRCLE K



Miss Charlotte Taylor, Circle K Sweetheart.



Frank Rogers



Wallace West



Oliver Vestal

# THE SEAHAWK



Business manager Betty Ward posts announcements concerning the *Seahawk*.



As editor of the college newspaper Judy Ely spends much of her time "chasing news" and "grabbing pictures."



Mr. Thomas R. Lupton serves as faculty advisor of the *Seahawk*. His job includes supervision of advertisement sales and the type of news that goes into the paper.



Mary Gillilan and Sarah Hunnicutt, *Seahawk* typists, look over material for the next issue.

The newspaper of Wilmington College serves many purposes. Through this means of informing the students, it creates school spirit in activities while it strives to improve conditions which may not be easily recognized.

The *Seahawk* also makes announcements such as the returns of the May Court election. Bulletins of information from other colleges are conveyed through the newspaper.

The members of the *Seahawk* staff often can be seen seeking information from club officers and faculty members. After each layout is completed and the stories written, the paper is printed while the reporters begin work on the next edition.

## INFORMATIVE AND ENTERTAINING

Ritchie Watson and Sondra Wilson, associate editors, discuss the layout of the front page of back issues.



Ed Mauney serves as the student photographer for the publications of Wilmington College.



# THE FLEDGLING STAFF



Jonnye Flora, Mary Helen Long, and Claire Millican work diligently on copy.

Frank Brown, Sophomore Assistant Editor, and Martha Jay Staton, Freshman Assistant Editor, discover the many tasks that go into making a yearbook.



Barbara Brodnax  
Business Manager

The Business Staff is composed of Mary Gillilan, Barbara Brodnax, Laura Ellis, Assistant Business Manager, and Linda Baysden.





Mitchell Todd, Charlotte Taylor, and Jim Hudgens plan picture schedules for the sports.



George McKecum and Marcia Kalfeltz sort pictures out for use.



Mr. Gerald Rosselot  
Advisor



Frances Best  
Editor

## MEMORIES OF 1961-62

Marie Lassiter and Doris Hardison plan lay-outs.



Gennell Sugg, Sarah Hunnicutt, and Ann Ferguson compose the feature staff.





# WE EXCEL

The bouffant dress of the southern belle easily portrays the beautiful styles of the period of plantation life. These styles reveal the elegant taste of the people and their interest in the excellence of the day. The southern belles may not wear this style of dress in the fashions of modern times, but the beauty of a young lady is the symbol of the socials of the year.

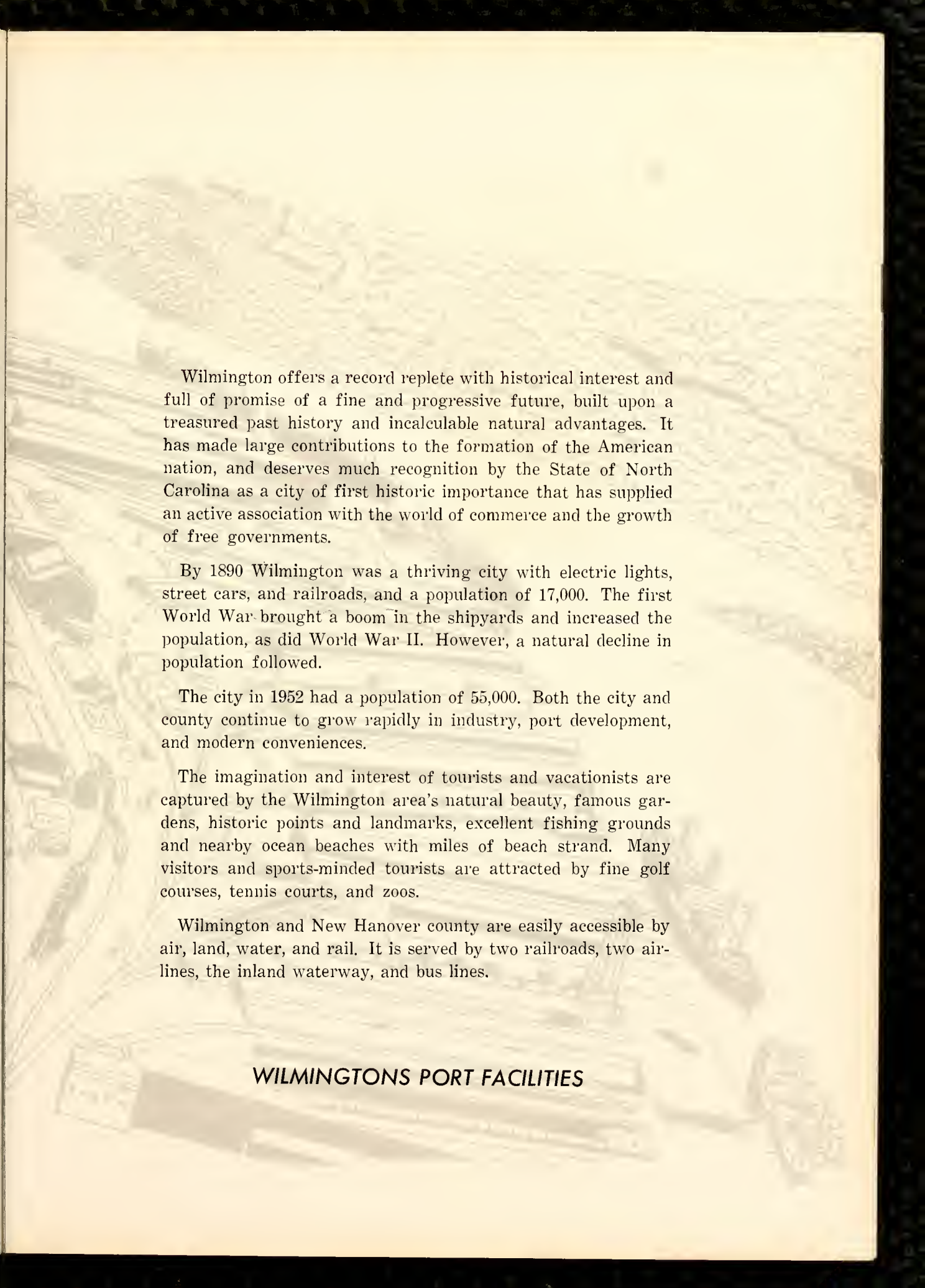
The academic life has its limit in every college, for the students must have varied activities to satisfy their active minds. During the year different social are sponsored to create interest among the students in their school and its importance. These activities range from Faculty-Student socials to the formal May Dance and informal post-game dances. The election of the Sophomore Superlatives is a highlight for the second year students. The *Fledgling* Beauties reveal the belles of the college.

Thus, the students display their excellence in the midst of the busy class schedules and deadlines. This section features the students of Wilmington College who have excelled in the socials of the year.









Wilmington offers a record replete with historical interest and full of promise of a fine and progressive future, built upon a treasured past history and incalculable natural advantages. It has made large contributions to the formation of the American nation, and deserves much recognition by the State of North Carolina as a city of first historic importance that has supplied an active association with the world of commerce and the growth of free governments.

By 1890 Wilmington was a thriving city with electric lights, street cars, and railroads, and a population of 17,000. The first World War brought a boom in the shipyards and increased the population, as did World War II. However, a natural decline in population followed.

The city in 1952 had a population of 55,000. Both the city and county continue to grow rapidly in industry, port development, and modern conveniences.

The imagination and interest of tourists and vacationists are captured by the Wilmington area's natural beauty, famous gardens, historic points and landmarks, excellent fishing grounds and nearby ocean beaches with miles of beach strand. Many visitors and sports-minded tourists are attracted by fine golf courses, tennis courts, and zoos.

Wilmington and New Hanover county are easily accessible by air, land, water, and rail. It is served by two railroads, two airlines, the inland waterway, and bus lines.

## **WILMINGTONS PORT FACILITIES**



MAY QUEEN . . .

MISS PEGGY ANNE HARRISS



## MAY QUEEN

MISS PEGGY ANNE HARRISS serves as the 1962 May Queen of Wilmington College. Miss Harriss represents the school in the North Carolina Azalea Festival and is crowned at the formal May Dance. The May Queen hails from Wilmington and is majoring in elementary education.

## CAMPUS BEAUTY

## PORTRAITS . . .

MISS CHARLOTTE TAYLOR is the Maid of Honor in the Wilmington College May Court. She was chosen by the freshmen to represent them in the beauty court of the May Dance. Miss Taylor is a native of Georgetown, South Carolina.

## MAID OF HONOR



MISS DIAN GRITZKE, Sophomore Attendant, is a business major and enjoys twirling and cheerleading.



## MAY COURT . . .

Another Wilmingtonian, MISS JANE MALPASS represents the Sophomore Class as attendant. Jane is majoring in elementary education.

With the coming of spring each year, the students at Wilmington College prepare for the season with the election of the May Court. The girls selected for this honor represent the college in the North Carolina Azalea Festival.

The entire student body elects the May Queen who is nominated from the Sophomore Class. The sophomores vote for the Sophomore Attendants; and the freshmen, Freshman Attendants. The Maid of Honor also comes from the Freshman Class.

A major in journalism, MISS SONDRA WILSON is a petite brunette and enjoys water skiing. She is one of the Freshman Attendants for 1962.

The May Dance is the formal dance of the year. The highlight of the dance is the presentation of the May Court with their escorts.



As Freshman Attendant, MISS MILLY STONE is a representative of her class in the May Court. Miss Stone's home is in Whiteville, North Carolina.



The Wilmington College May Court decorate an old staircase with new beauty: Misses Charlotte Taylor, Maid-of-Honor; Peggy Anne Harriss, May Queen; Sandra Wilson, Freshman Attendant; Jane Malpass, Sophomore Attendant; Dian Gritzke, Sophomore Attendant; and Millie Stone, Freshman Attendant.



## HOMECOMING COURT . . .

Miss Charlotte Taylor reigns as  
Homecoming Queen of Wilmington Col-  
lege for 1962.





The members of the Wilmington College Homecoming Court are Misses Sandra Wilson, Pen Pushers; Maurice Broadwell, *Seahawk*; Kay Wells, Panthemanian Society; Mary Henderson, Cheerleaders; Judy Hayes, Engineers

Club; Frances Best, *Fledgling*; Vivian Harris, *Seahawks*; Linda Hancock, WILC Student Broadcasting Service; Millie Stone, Merchandising Club; and Charlotte Taylor, Circle K Club.

## CENTER OF HOMECOMING

Homecoming Week-end is the highlight of the year at Wilmington College. This event takes place during basketball season, and each organization of the college takes part in the various activities.

Homecoming begins with a bon-fire, this year on campus, at which the Wilmington College Band plays. The following afternoon is welcomed by many students lined up on the streets of downtown Wilmington to watch the parade of the contestants for the title of Homecoming Queen. The clubs of Wilmington College sponsor girls from the two classes to run for this honor and to make up the Homecoming Court. An informal dance and formal dance are also on the agenda for Homecoming events.



The Homecoming Parade makes its way down Second Street amid horn-blowing and shouting.



Mary Henderson, contestant for Homecoming Queen, rides atop one of the convertibles.

## HOMECOMING



Louisburg, Homecoming opponent, is also represented.

Who's taking pictures now?

Penny Pig, Homecoming Queen (for the parade), is a main attraction.





The Warmstream Guards add color and variety to the parade.



The Homecoming Queen rides unsuspectingly in the parade of contestants.

The Cheerleaders bring out the school spirit for Homecoming Week-end.

## WEEK-END

The presentation of the Homecoming Queen is made during the half-time of the game. Peggy Anne Harriss and John Pistolis, Co-chairmen of Homecoming, present flowers to Charlotte Taylor.



# SOPHOMORE

## "FRIENDLIEST"

In this picture we find the "friendliest" of our campus—Barbara Brodnax and Frank Brown—having always a ready smile and a kind word for everyone.



## "BEST LOOKING"

Genie Goodman and Bill Haywood strike an attractive pose framed as our "best looking" couple.



# SUPERLATIVES . . .

## "MOST ORIGINAL"

Elected the most pleasingly different, we find Betty Ward and Hiram Lee taking the spotlight.



## "MOST TALENTED"

Sandra Willoughby and Doug Hunt, both musically inclined, are Wilmington College's most talented couple.

# OUR

## "BEST ALL AROUND"

In the student's opinion, Frances Best and Jim Hudgens were found to be the finest of the fine.



## "MOST INTELLECTUAL"

Ruining the curve, we find Rita Sapp and Bobby Ludlum—our most outstanding scholastic students.



# BEST

## "MOST SCHOOL SPIRIT"

The enthusiasm of Judy Hayes and Al Shew give our school spirit a necessary boost.



## "WITTIEST"

Judy Butler and Allen McDevitt are always first with the funniest and best.



## MISS NORTH CAROLINA

Miss Susan Kay Woodall, the lovely Miss North Carolina, honored the Fledgling by selecting Miss Fledgling for 1962. The staff, having selected the nine Fledgling Beauties, asked Miss Woodall to choose the queen solely on the basis of the pictures sent to her.

Miss Elizabeth Yarborough is Miss North Carolina's choice for Miss Fledgling.





Miss Elizabeth Yarborough

**MISS FLEDGLING**

Miss Dian Gritzke



Miss Millie Stone

## FLEDGLING

Miss Mary Dees



Miss Gennell Sugg





Miss Carol Hewett

Miss Peggy Anne Harriss



# BEAUTIES

Miss Frances LeNeave



Miss Charlene Anderson



# WE PLAY

A popular sport in this past generation was "wheeling" a two-seater as couples passed many happy hours pedaling over the countryside. This was a method of visiting, sightseeing, and exercising as well as sharing a mutual pleasure. This domestic sport has had many varied forms in the years that it has spent as a favorite pastime through team jaunts, races, and therapy.

Sports play important parts in the developing of an organization as much so as the vital purposes. Through this unity, a group can set its goals high and confidently hope to attain them. The sports activities of Wilmington College have been more than an asset. The recognition that the teams have received in a far reaching area has been invaluable for the prestige of the school. The variety of sports, as limited by the climate, provides a game for all interested students.

The influence of sports on student life of a college cannot be over emphasized. Just as the past generation used sports to develop well-rounded students, the present day student uses them to create interest in all phases of college life. This section is the sports of Wilmington College.





The life of sports is the natural learning activity of people everywhere. Through it is digested some of the deepest and most poignant experiences of many lives. Through it is fit the incomprehensible segments of the world into an understandable whole. From the dramatization of human relationships, occupations, current events, stories from life, from books, from radio, and from movies, one can acquire this comprehension.

As industrialization grew in the Wilmington area, space for sports almost disappeared, and the content of sports activities itself thinned out. Realizing this, the elders of the town developed a worthwhile Play Area Development Program based upon the natural sporting interest of each age level. As the experiences of Wilmingtonians enlarged, the interest in the immediate environment was extended to include new activities.

With the passage of time there developed a community abundance of facilities for almost every sport enthusiast. Nearby ocean beach resorts offer recreational facilities to tourists, vacationists, and sportsmen. Excellent swimming facilities are available in clean, clear water, warmed by the Gulf Stream. The sounds are ideal for sailing, boating, skiing, and fishing. Angling in Wilmington and the surrounding area is enhanced by the activities of the New Hanover Fishing Club, the largest of its type in America, and the Yacht Club.

Golf is played on Wilmington's fine municipal course, or on one of the country club courses. The PGA Azalea Open Golf Tournament is held annually in the spring. A number of tennis courts are also open to the many tennis enthusiasts.

New Hanover and the adjoining counties provide opportunities for hunting of all kinds of game. Wilmington has many parks plus a number of city playgrounds and athletic fields. Greenfield Park is one of the beauty spots of the South.

## GREENFIELD PARK



## COACH WILLIAM J. BROOKS

The familiar tall figure of the coach of Wilmington College has for several years been the symbol of the growing prestige of the sports of the college. Mr. William Jasper Brooks has led the baseball team to the national championship in 1961 and the basketball team to the finals of the championship in 1962.

Mr. Brooks, Associate Professor of Biological Science, received his AB from Atlantic Christian College in 1948 and his MA from East Carolina College in 1959. As a member of the faculty at

Wilmington College, he has taught health and physical education courses. The coach spends much of his time searching for candidates for the teams of the college.

The new campus of Wilmington College will soon include a baseball field due to the efforts of this man. Because of his work on the field itself and his work for the improvement of the school, the Board of Trustees has named the field "Brooks Field".





Eugene Bogash clashes with a North Carolina State player as he jumps for the ball. Team mates Jim McCurdy and Mike Hebron prepare to catch the ball with the opposition players.

## TEAM ACTION

The Seahawks of Wilmington College began the 1961-62 season with a non-conference win over the North Carolina State Freshmen by a score of 79-63. Returning from Raleigh, the team defeated Atlantic Christian College, 86-46.

Collecting the first loss of the season, the Seahawks played the Citadel Freshmen in a 73-79 game, but this was to be avenged in the return battle on home ground with a 94-84 score. In this victory, Eugene Bogash broke his previous score record with 33 points.

Jim McCurdy, Al Thiry, and Larry Edens tied for high scorers in the Wilmington-State Freshmen game with 22 points each. This victory was the second over the State team with a 102-79 score.

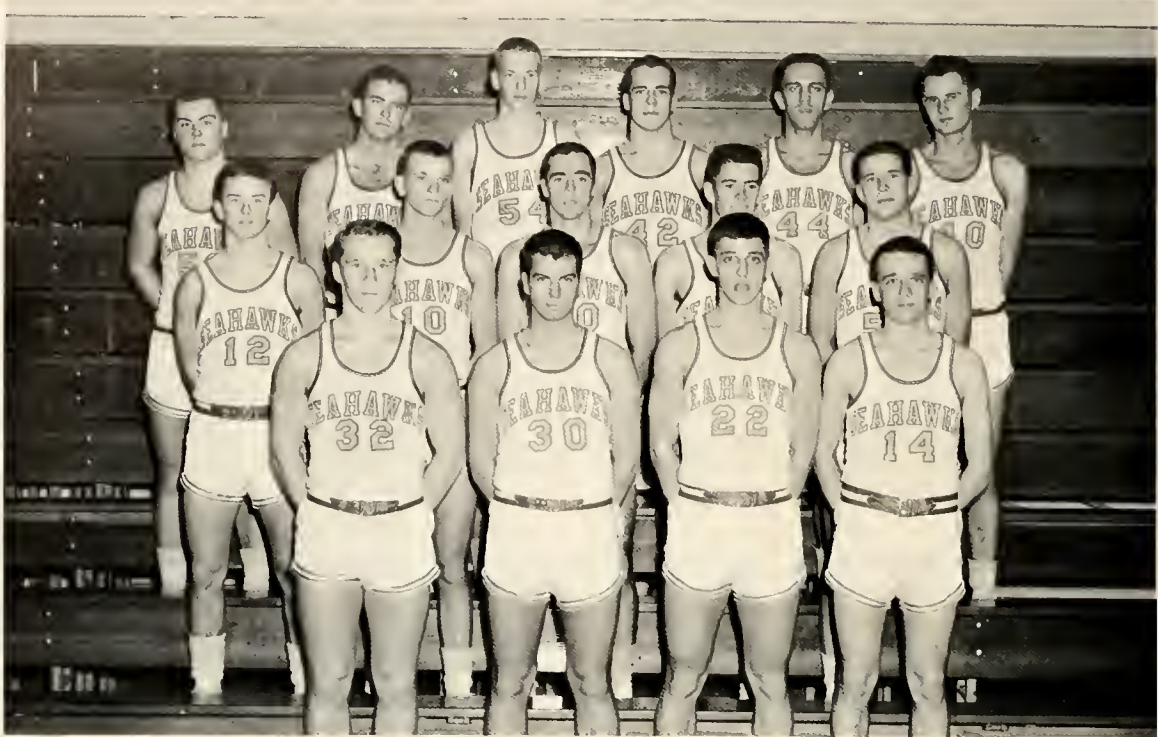
The next two non-conference games were losses with final scores of 68-70 and 71-94 to the University of North Carolina Freshmen and the University of South Carolina Freshmen respectively. Edens led the first game with 16 points; Eugene Bogash, the second with 32 points.

The Wilmington group met St. Andrews in Laurinburg for a 98-82 victory. Bogash again led the Seahawks with 23 points, high score for both teams.

Bogash and Thiry were high scorers for the 76-42 win over Charlotte College. With a limited team the Seahawks still had no trouble defeating this rival.

Larry Edens and the Louisburg team player seem to suspend from a mutual point as the ball flies away near the Seahawk hung for the Homecoming Game.





The members of the 1961-62 seahawk team are *front row*, Bob Scott, Walter Jones, Gary Hedrick, Bill Henderson; *second row*, Mike Hebron, Phil Stephenson, Larry Edens,

Hary Buzzell, Don Marshall; *back row*, Jim Evans, Bill Haywood, Marshall Hamilton, Jim McCurdy, Al Thiry, and Eugene Bogash.

## THE SEAHAWKS . . .

Harry Buzzell  
*hails from Maine*



Walter Jones  
*guard*



Eugene Bogash  
*superior skill*



Mike Hebron  
*guard with spirit*





Jim McCurdy "flies" for two points in the midst of the opposition.



Larry Edens  
Sharpshooting "Gator"

## WELL-BALANCED TEAM

Continuing without the prep students, the home team walked over Chowan College in Progden Hall for a 90-72 score. Larry Edens made 25 points, having 7 successful free throws. Harry Buzzell and Gene Bogash each received 16 points.

The return of the prep students to the non-conference game with Duke Freshmen was not enough strength to beat this team. The Hawks bowed with an 87-91 final score. "Bo" again led both teams in scoring with a 32-point tally.

Coach Brooks used only 6 of his squad to defeat the Louisburg College team in Louisburg, North Carolina. To the loud cheers of a bus load of Wilmington fans, Bogash, Thiry, Bill



Marshall Hamilton  
Center with height

Al Thiry  
Steady scorer

Bill Haywood  
Good defensive player

Don Marshall  
Big rebounder

Bill Henderson  
Dependable guard





Gary Hendrick  
*able guard*



Phil Stephenson  
*Strong starting guard*



Jim Evans  
*big reserve*



Jim McCurdy  
*fast starter*

Haywood, Phil Stephenson, Edens, and Buzzell captured a 74-59 win.

Revenge was also found against the University of South Carolina Freshmen as Brooks' boys won over the team by 12 points. McCurdy and Edens led the home scoring.

On the road for the next two challenges and victories, the Seahawks played 66-50 and 76-66 games over Atlantic Christian and Chowan. In the first game McCurdy totaled 14 points, and Bogash and Edens tied with 13 which was to follow in the latter game with 24 points.

Home for another non-conference, the team

continued their winning streak with a victory over St. Andrews College. Although the Hawks tried hard for a 100-point score, time ran out with one point lacking against 76 of the opposing team.

The Homecoming Game of Wilmington College was played with Louisburg as the foe. The 79-66 victory was not an easy one as the starting five, Thiry, Haywood, Bogash, Edens, and Stephenson, played the majority of the game, hitting 69% from the free throw line. "Big Al" set his high for games played to date with 28 points.

Marshall Hamilton jumps for the Seahawks against a member of the North Carolina State team.





Miss Genie Goodman heads the cheerleaders and is responsible for their practices and performances.



The cheerleading squad of Wilmington College provides the necessary leadership of school spirit. Yelling at the basketball games is not the extent of their duties for they also obtain buses for the out-of-town games and give pep rallies on campus before important games.

## SEAHAWK CHEERLEADERS

The members of the group pose on the lawn in uniform—Ellen Tomz, Dian Gritzke, Jane Wooten, Judy Hayes, Frances Davis, Mary Henderson, Ann Ferguson, and Helen Connelly.





Ricky Berman, Scott McKinnon, Jack Dunn, Val Edwards, and Eddie Freeman, members of the Wilmington College golf team, pose outside the club house before a practice round at Pine Valley Country Club.

Jack Harrell demonstrates good form on the fairway.



## THE GOLF TEAM . . .

Even though the golf team of Wilmington College is in an immature stage, it hopes to become an integral part of Wilmington College's sports activities. The formation of any organization is always its hardest step, but the golf team has had little trouble in finding interested students.

In their spare time, the members can be seen on the greens trying to improve their techniques with tips from Mr. Frank Allen, faculty advisor.

The golf team challenges nearby college teams to matches, thereby expanding the sports publicity of Wilmington College. Other members of the faculty also help teach the students in their spare time.

Membership in the golf team does not require a certain capability in the sport. The members are students who merely enjoy the game, like to share it, and look forward to competition.



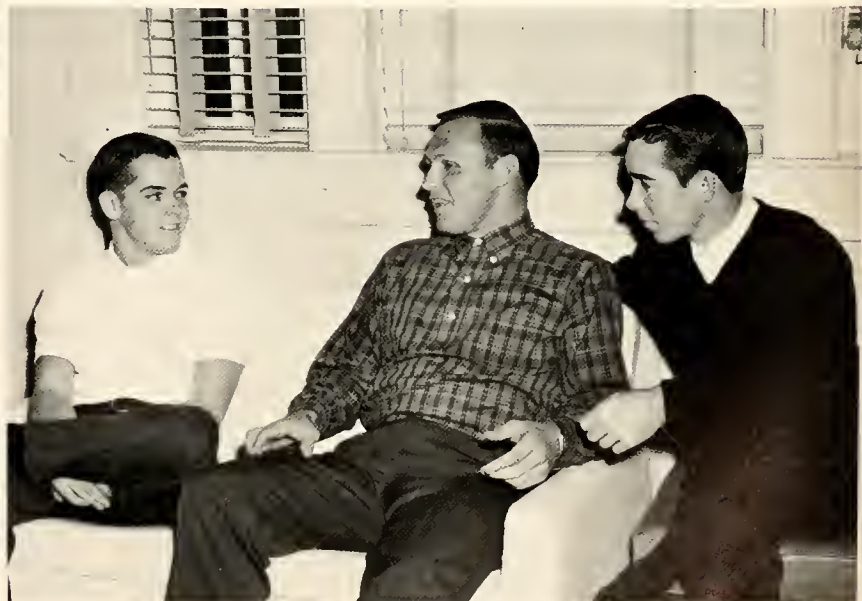
Ricky Berman concentrates on a putt as Val Edwards looks on.

## PRACTICE FOR PERFECTION

Mr. Franklin H. Allen, Associate Professor,  
Biological Sciences, coaches the golf team.



Will Gemmell, Bill Cunniff, and Jack Harrell discuss their game.





Jimmy Cook and Johnny Eakins shake hands after a practice match.



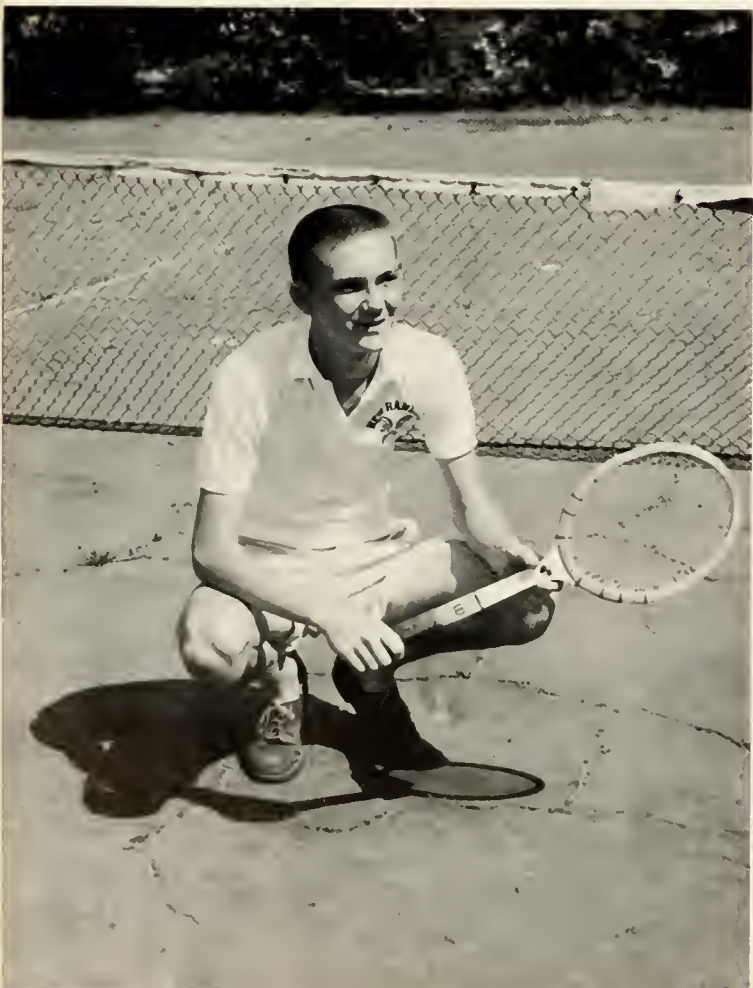
Billy Lanier is a capable member of the team.



Practicing for a future game is Johnny Eakins.

## TENNIS TEAM . . .

Doug Ward, Captain of the Wilmington College Tennis Team, provides able leadership.



The Wilmington College Tennis Team is one of the new groups of the school. This game provides interested students in a popular hobby while they are subjected to friendly competition and games with other schools.

The tennis team members practice in the afternoons during the spring quarter. Walter Biggs serves as advisor of the team, and he helps them to improve their skills while building an efficient team. The team makes road trips with the baseball team and play some top tennis teams in the area.





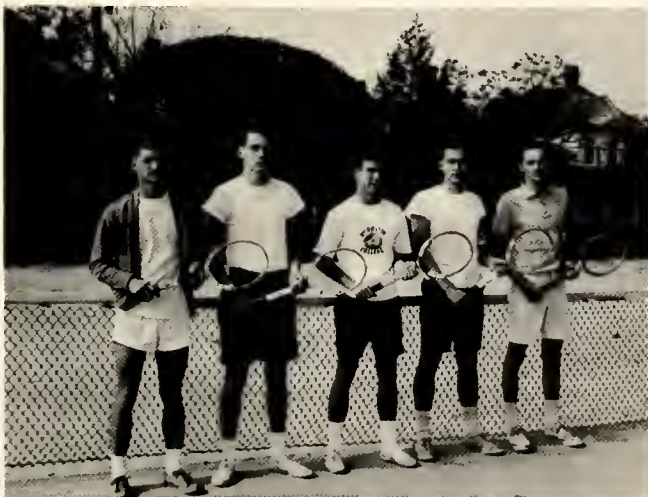
Tommy Gerock practices a difficult stroke.



Jimmy Cook may not make this stroke, but he catches the camera's eye.

## SKILLED NETMEN

The members of the Wilmington College Tennis Team are Jimmy Cook, Johnny Eakins, Tommy Gerock, Billy Lanier, and Doug Ward.



Billy Lanier and Doug Ward practice together for a doubles match.





Coach William J. Brooks, looking over the team roster, is responsible for the superb training of the Wilmington College baseball team.

The Seahawks began their 1961 baseball season with a week of training in Tallahassee. The headquarters for the drilling was a baseball camp operated by Florida State University. Danny Litweiler, former major league outfielder, lined up practice games for the team.

The Wilmington College team lost the first game of the season but were to revenge that start by ending with a 15-2 season record. The first victory of the season was a 2-0 game over the University of North Carolina freshmen. Righthander Bill Haywood pitched a 4-hit shutout. Outfielder Larry Edens batted in Blair Walker for the first run and then scored himself on an error by the shortstop.

The record climbed to 2-1 as Ronnie Durham pitched a 2-hitter in the 13-0 victory over Chowan College. Durham allowed only 2 singles and struck out 11 men. The Hawks chalked up 14 hits off of the three pitchers of Chowan. Larry Edens made 3 hits, and Louis Howard and Wayne Taylor each made a triple.

Gaining possession of first place in the Virginia-Carolinas Junior College Conference, the Wilmington College players blanked Louisburg College 5-0. Lawrence Keith began the game with a base on balls, advanced to second, then to third on David Miller's infield hit, and scored on a double-steal play with Miller going to second. Keith tallied again with a single and double. Haywood gave up 4 hits while the Hawks made 5 hits in the game, using walks to help make the score.

## VICTORY . . .

The members of the Wilmington College Seahawks are, kneeling, Lawrence Keith, Jim Worthington, Dave Goold, Blair Walker, David Miller, Bobby Tate, Hiram Lee; standing, Ronnie Durham, Larry Edens, Phil Stephen-

son, Don Honeycutt, Bill Haywood, Tommy Hines, Al Sonntag, Bennie Broome, Wayne Taylor, Ronnie Smith, and Louis Howard.



## Soaring Seahawks Pound Mesa, 8-3, For National Jr. College Championship

GRAND JUNCTION, Colo.—The Wilmington College Seahawks easily defeated Mesa Junior College, 8-3, here Tuesday to win the National Junior College Baseball championship sweeping four straight games.

The national title climaxes three years of tourney play here for Coach Bill Brooks' Seahawks. They finished fourth in 1959 and were fifth last year.

Righthander Bill Haywood went the distance for the Hawks on the mound, giving up nine hits, strik-

ing one, and allowing two runs. First baseman Ronnie Durham was selected by sportswriters and broadcasters covering the tourney as the most valuable player.

Durham, Taylor and Miller were named on the all-tournament team. Durham won the first three games for the Seahawks, two in relief, and batted .600 for the four games, including two home runs.

The victory over Mesa was the second for the Hawks in the double-elimination event. Mesa lost to Wilmington, 16-9. Monday

at Wilmington, N. C., sometime late Saturday. Only four players will be returning with Coach Brooks, most of them dropping off in their home towns.

Smith and Durham will stay in the west to play semipro baseball this summer in Pierre, S. D.

Miller opened the Hawk second with a line double to leftcenter. He scored immediately when Smith rapped another liner to left

(See Related Story, Page 9)

for a single. Tommy Hines forced

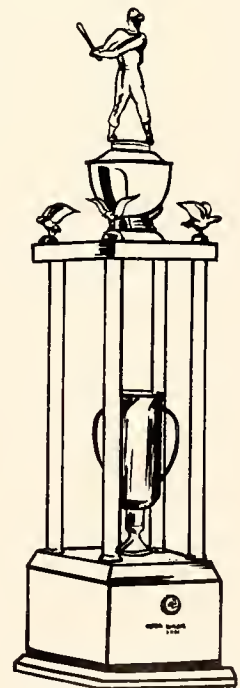
## AFTER 16-2 RECORD

The seventh straight win of the season came with the 7-2 victory over Frederick College. Ronnie Durham gained his second win with no losses as he allowed the visitors 5 hits, walked 3 men, and fanned six. A wild pitch in the fifth gave the Hawks the first point of the game. Frederick scored two in the top of the sixth, but Ronnie Smith answered this with a 340-foot home run over the leftfield wall. Durham walked in the seventh, and Lawrence Keith hit a long drive to put two men on base. Durham was put out as he tried for a steal to third. Taylor and Edens walked to load the bases. Miller hit a double to leftcenter to score Keith and Taylor, bringing the game score to 4-2 with an easy victory ahead.

Coach Bill Brooks' squad advanced to a 12-2 overall record and an 8-2 loop with the 16-5 win over Edwards Military Institute. The combined efforts of Bill Haywood, Lou Howard, and Bobby Tate held the foe to eight hits. Haywood was put out of commission for the night in the top of the third inning as he was struck on the forehead with a line drive. He was taken to the hospital, but he recovered shortly. Howard took over for five frames to strike out eight men. Tate allowed only one hit in the last two frames. Tommy Hines doubled with the bases loaded to score three runs.

Haywood proved his recovery in the next game by striking out 13 batters and allowing five singles, making his record 5-1. The Hawks managed only four singles, but had eight bases on balls and four errors from the opposition to win by a score of 5-1. The team played this game against Campbell College with no errors and one doubleplay.

Ronnie Durham starred in the 8-0 victory over the North Carolina State freshmen. Durham pitched a one-hit shutout and hit a 380-foot home run in addition to a triple and two singles. The hit was a triple, and the home run came in the third inning over the centerfield fence. This win gave the big righthander of Asheboro a record of 4-0. The Hawks





Bill Haywood, 7-1, won the decision game over Mesa Junior College for the national championship title. Haywood came to Wilmington College with a 21-5 record for a year with the Marine corps.

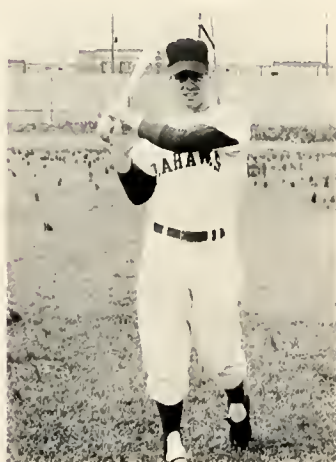


Ronnie Durham, 7-0, was selected Most Valuable Player in the National Tournament in Grand Junction, Colorado, and was named on the all-tournament team.



Louis Howard, 4-1, struck out 21 men in one game of the season for the high. Louis had a .312 batting average entering the playoffs.

## THE BASEBALL TEAM . . .



David Miller, All-Star shortstop, had a .396 batting average at the end of conference play last year.

Wayne Taylor, All-Star catcher, hit a single and double and knocked in three runs in the final game of the tournament.



got eight hits off of the two pitchers of the State team. Larry Edens, Louis Howard, Dave Miller, and Dave Gould each batted singles.

As the conference champions entered the region playoffs, the overall batting average was .252, including three home runs. Louis Howard had a .312 mark. Dave Miller, shortstop, had a .396 average, leading the Hawks.

Six runs in the fifth inning allowed the Wilmington team to roll over Spartanburg College, Western Carolinas Conference champions, by a score of 10-2 in the first game of the Region 10 baseball series. Haywood gained his sixth win and allowed 8 hits. Larry Edens banged a double into rightfield; Dave Miller singled Edens and Howard home to begin the bevy of winning hits for the host. Haywood's two for three topped the Seahawks 7-hit attack. With this victory the team gained an overall record of 16-2 and the thirteenth straight victory.

Winning the Virginia-Carolinas championship, the Hawks traveled to Grand Junction, Colorado, for the National Junior College Baseball Tournament. Ronnie Durham starred on the pitching staff for the home team, winning two games on relief and one on his own. His efforts were awarded as he was selected the Most Valuable Player of the tournament. Durham also hit two home runs and batted .600 for the four games played.

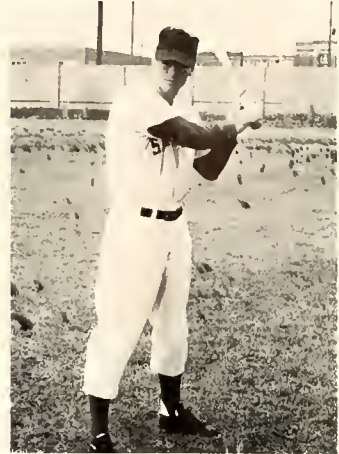
The final game of the tournament was won over Mesa Junior College with a score of 8-3 for the national championship title. Bill Haywood gave up nine hits, struck out seven, and walked two. The Hawks played without an error, hitting 14 line drives.



Don Honeycutt, pitcher, is a great asset to the 1961 team.



Second baseman Phil Stephenson prepares for a catch.



Larry Edens, outfielder, displays his hard-hitting technique.

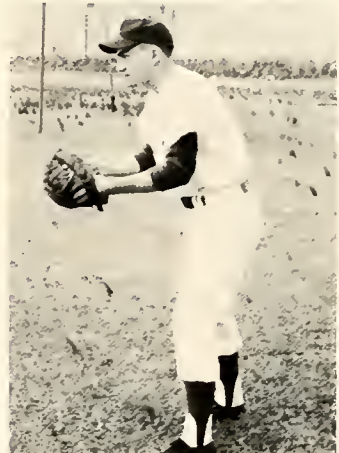
## PRIDE OF WILMINGTON



Ronnie Smith, outfielder, is one of the home run hitters.



Dave Gould is one of the catchers for the Seahawks.



Blair Walker, second baseman, is a husky relief.



Pitcher Bobby Tate is the quiet man of action.



Tommy Hines practices his catching task.



Jig Bennie Broome is invaluable on third.



# WE ADVERTISE

As the couple examine the automobile on the display platform, they are thinking of buying a car or just looking at the different models available. They express the importance of advertisement which has reigned for many years. The products of the companies change to suit the needs of the people as advertisement develops new means of selling them.

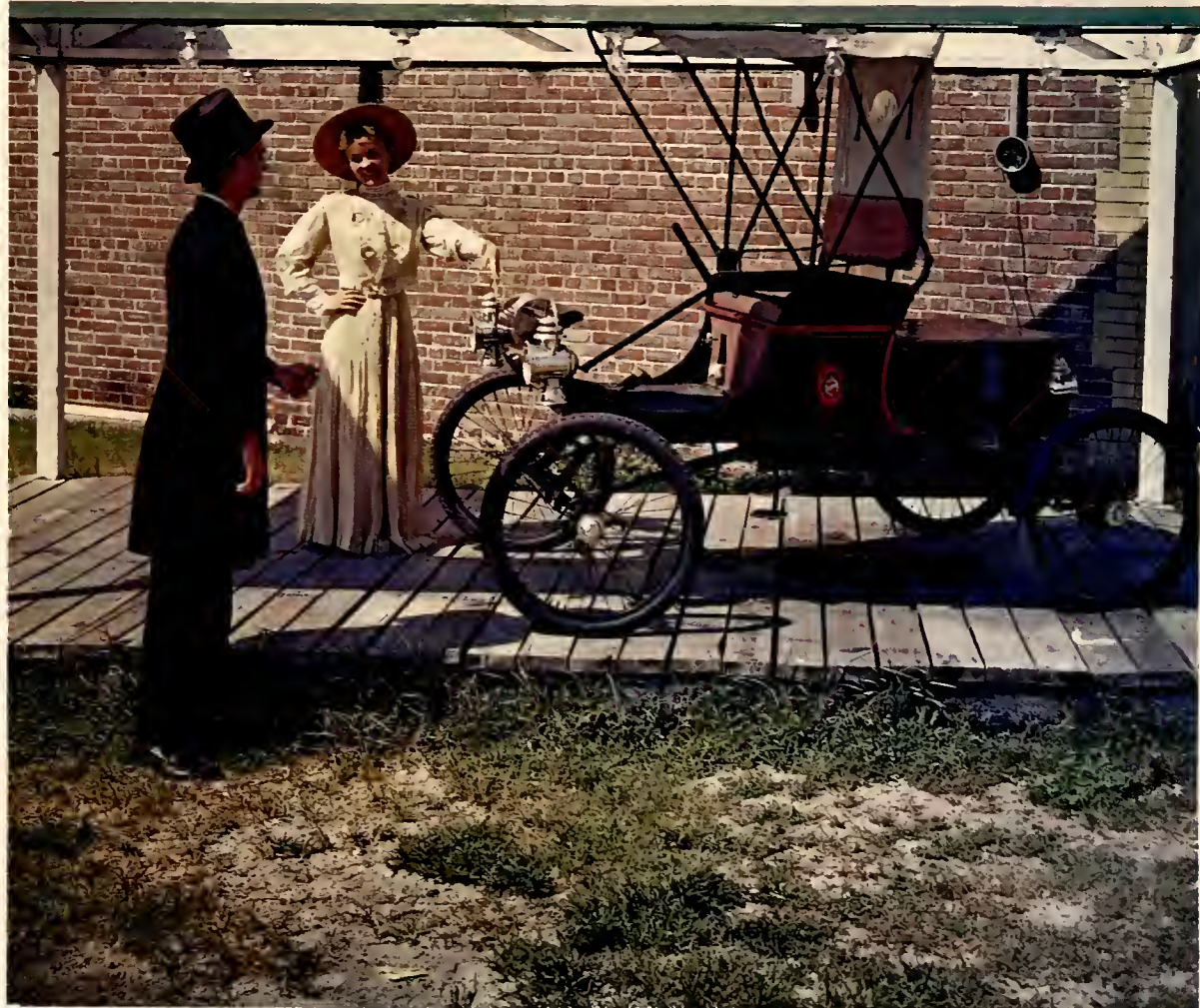
Advertising is important for both the manufacturer and the consumer. Through this means the communication between the two is made profound. Advertisement is also important for giving the people support and, in turn, receiving their trust. The following pages are the advertisements of the people of the Wilmington Area.

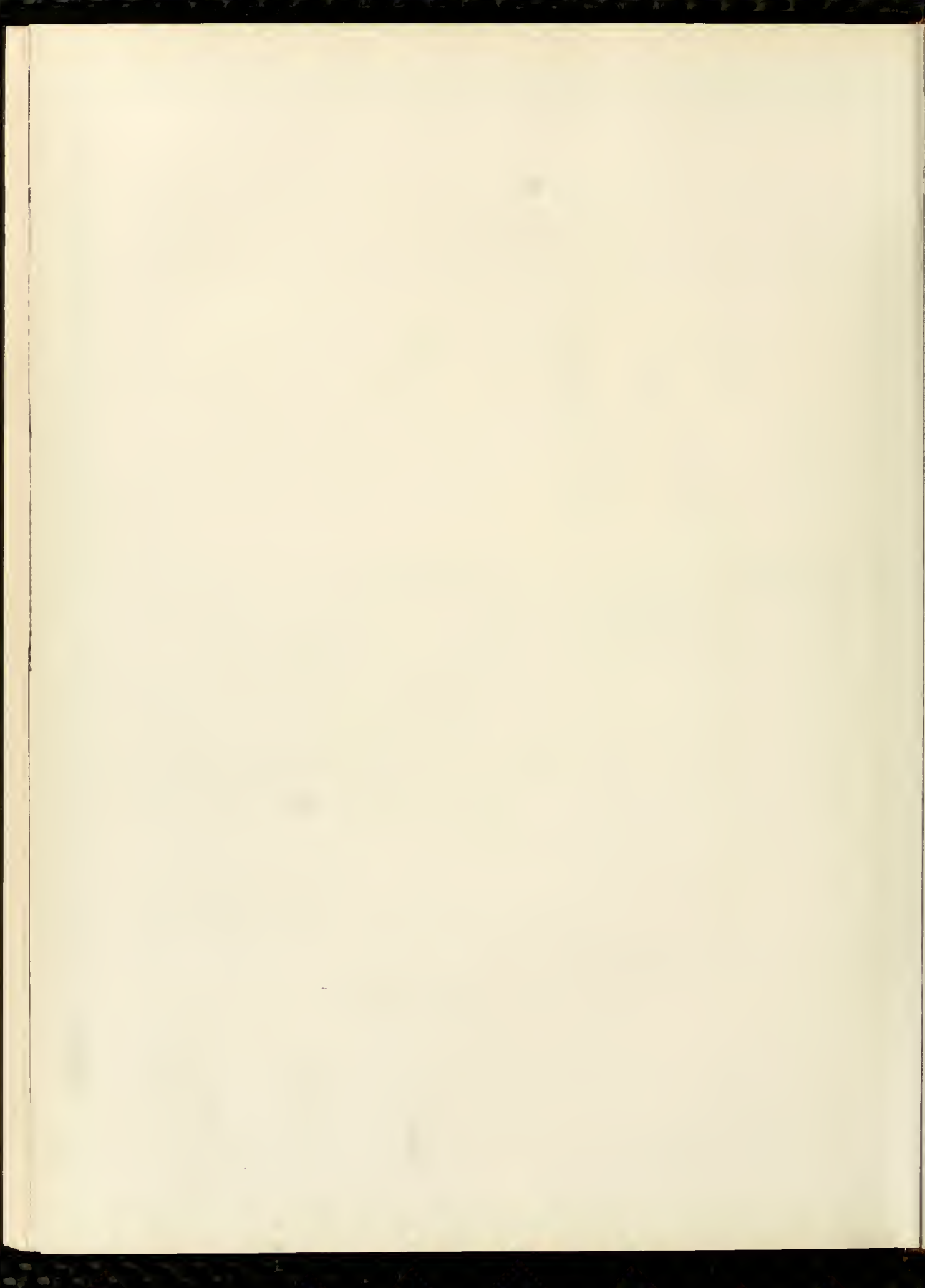


**KEY**

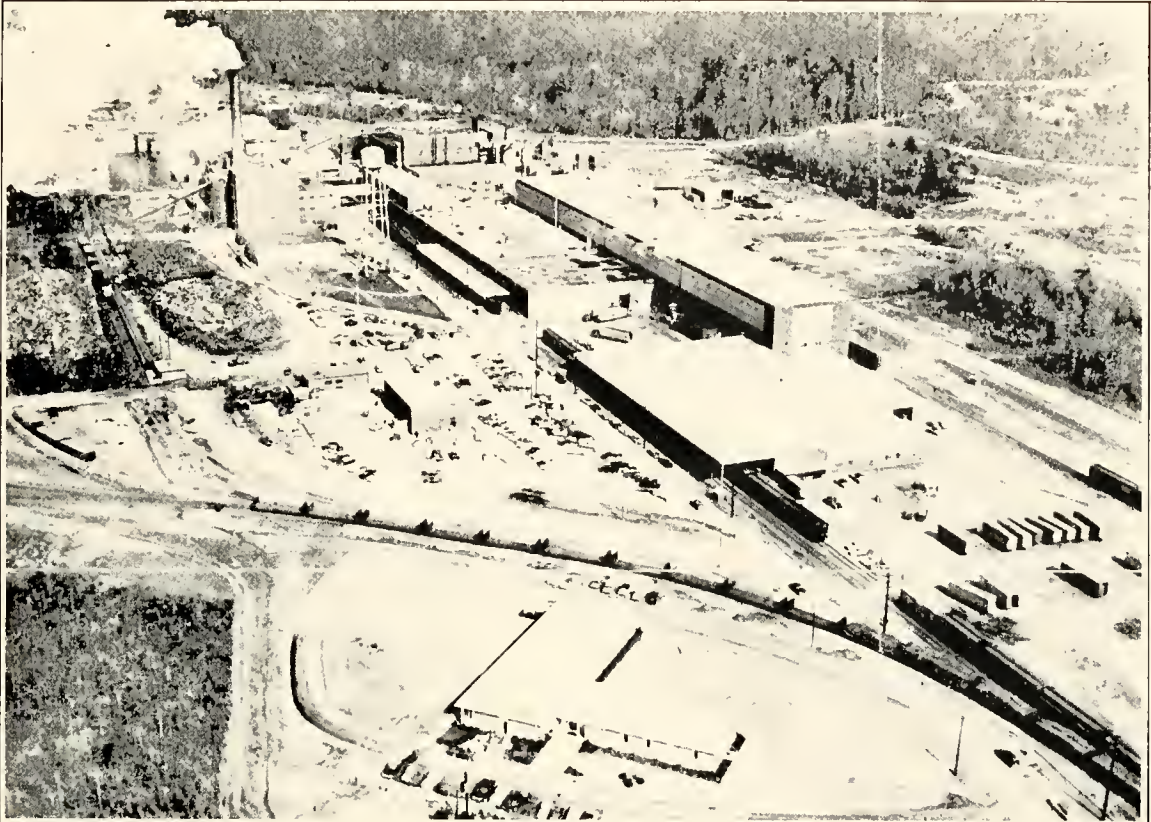
**763-6**

**USED CARS**









**RIEGEL PAPER CORPORATION**

Makers of  
Fine Quality  
Pulp & Paper



Compliments of  
**FRED P. CONNER**  
**Coastal Motors**

Market & Eleventh Street  
Resident ROger 2-1645 Business ROger 3-2421

Compliments of

**BERRY WILLIAMS**  
**Coastal Motors**

Market & Eleventh Street

**WESTBROOK'S FLOWER SHOPPE**

1117 Market Street  
RO 2-4968

"Flowers for All Occasions"

**NEWTON'S CLEANERS AND LAUNDRY**

12th & Princess

**AL'S HARLEY-DAVIDSON SALES**

1106 Market Street  
Wilmington, N. C.



Phone RO 2-8830

**CAPE FEAR ELECTRIC CO.**

1103 Princess St.  
Wilmington, N. C.

**Industrial Commercial**

**Household  
Motor Rewinding  
Sales and Service**

D. S. Reynolds

Owners

D. T. Reynolds

Compliments of

**WILL REHDER**

"Wilmington's Oldest Florist"

Dial ROger 2-9649 1809 Dowsan Street  
WILMINGTON, N. C.



**O'Crowley's  
CLEANERS INC.**



American and Italian Food  
**REX RESTAURANT**

MOREHEAD CITY JACKSONVILLE  
PARK 6-5477 PHONE 4347

BRUNO MARINO, Prop.  
WILMINGTON

Highway 76 Oleander Drive Phone RO 36730  
PRIVATE DINING ROOM

Compliments of

**The MARINA RESTAURANT**

WRIGHTSVILLE BEACH, N. C.

Compliments of

**S. S. KRESGE COMPANY**

New Variety Department Store  
Azalea Plaza Shopping Center

Wilmington, North Carolina

**MORTON'S SERVICE DRUG STORE**

Corner of 8th and Market Street  
"Have Pill—Will Deliver"  
Dial ROger 2-7739

**MOHR'S ESSO SERVICE**  
Polishing—Washing—Tires  
Batteries and Auto Accessories

ROger 3-9376  
CORNER 12th and MARKET STREETS

**SAUNDERS DRUG STORE**

1608 Market Street  
Phones  
ROger 2-6663—ROger 2-6664—  
ROger 2-5209



Open An Account—Convenient Terms



14 N. Front St. Wilmington, N. C.



**SMITH BUILDERS SUPPLY, INC.**

165 Castle Hayne Road  
Dial ROger 2-3339 P. O. Box 1427  
Wilmington, N. C.

Phone Shop 763-5256 Res. 763-1066  
**NEWELL'S CHAIN SAW SERVICE**

Distributor for Poulan Chain Saws  
Eagle Island—Wilmington, N. C.  
Mail Address: P. O. Box 841  
Wilmington, N. C.  
C. R. Newell, Proprietor

**RHODES, INC.  
FURNITURE**

Dial ROger 2-5751  
310 North Front Street  
Wilmington, N. C.

**PENDER FURNITURE CO., INC.**  
"Home Furnishings"

George F. Hunt—Dial ROger 2-4954  
3311 Market Street  
Wilmington, N. C.

**SUN DROP  
IS GOOD**

**ELECTRIC BOTTLING  
COMPANY**



COCA-COLA BOTTLING  
COMPANY

Keep Swinging at  
**LEED'S YOUNG MEN'S SHOP**

Style Corner  
Corner Front & Market Street  
ROger 3-2755

Charge Accounts Invited

**Reed's**  
JEWELERS INC.  
7 NORTH FRONT STREET

for Diamonds

**CINDERELLA BOOTERIE**

- Weejun's
- Life Stride
- Naturalizers
- Adore
- College Debs
- Fiancee

127 N. Front  
Wilmington, N. C.

"The Nearest to the Campus"

*Payne's*

Hanover Center  
Ivy Campus Styles

- For:
- Men
  - Boys
  - Ladies

*Nisbet's*

155 - 161  
N. Front Street

**A. H. YOPP PIANO COMPANY**

"Everything Musical"  
Pianos, Phonographs, Radios, Records  
Musical Instruments and Supplies  
Piano Tuning and Repairing  
217 Princess Street Phone ROger 2-3722

**CRAWFORD'S FASHION  
CENTER**

Juniors, Misses and Women's Apparel  
157 North Front St.

**THE DIAMOND STORE**

The Jewel Box, Inc.  
Wilmington's Largest Credit Jewelers  
139 North Front Street  
Wilmington, North Carolina

**FOY-MOSS COMPANY**

RO 2-2129  
"Clothing for the Well-Dressed Man"  
121 North Front Street  
Wilmington, North Carolina

**Freeman**  
SHOE COMPANY

Wilmington, North Carolina  
"Shoes That Satisfy"

**MADemoiselle**  
Shoppe

Ladies Ready to Wear and Accessories  
Dresses—Coats—Suits—Spatswear  
Bridal Trousseaus

*Kingoff's*  
WILMINGTON'S LEADING JEWELERS  
INC.

"If It's from Kingoff's  
It's Guaranteed"  
10 NORTH FRONT DIAL 762-5219

**CAPE FEAR  
MOTOR SALES**

**Ford Cars—Ford Trucks  
Ford Parts and Service**

215-217 Market St. Phone RO 3-6221  
WILMINGTON, N. C.

**HOME  
FURNITURE COMPANY**

Phone ROger 2-5476

23 Market Street  
Wilmington, N. C.

Compliments of

**ATLANTIC MOTORS**

1020 Princess Street  
Wilmington, N. C.

**BOSEMAN'S  
SPORTING GOODS**

**"The Fastest with the Finest"**

1201 Princess Street  
Wilmington, N. C.



**COASTAL MOTORS, INC.**

**CADILLAC ● OLDSMOBILE**

**"Home of the New Olds"  
F-85**

Market at 11th Phone 763-2421

Compliments of

**MILL & CONTRACTORS SUPPLY CO.**

Mill, Contractors' & Marine Supplies & Equipment

WILMINGTON, N. C.

Compliments of  
**FOUNTAIN TIRE SERVICE,  
INC.**

**"Your Natural Rubber Recapper"**

175 Castle Hayne Road  
Wilmington, N. C.

Compliments of  
**HORTON IRON & METAL  
COMPANY**

1705 North 4th Street  
Wilmington, N. C.

**BUICK**  
V-6 — V-8  
**MACMILLAN BUICK CO.**

216 North 2nd Street  
Wilmington, N. C.

Compliments of  
**KINNEY'S SHOE STORE**

30 North Front St.  
Wilmington, N. C.

**MODERN LAUNDRY  
& DRY CLEANERS**

Phone RO 2-7751

Main Plant—118 South 17th Street  
Wilmington, N. C.



Progress is made in the Student Broadcasting room with the addition of a turntable.

dial 762-0348  
**Jackson & bell** **Printing  
Company**

Serving Southeastern N. C. Since 1877

PRINTERS AND LITHOGRAPHERS

107-109 North Second Street

Wilmington, N. C.

Compliments of  
**KEY MOTOR COMPANY**

724 South 17th Street  
Wilmington, N. C. RO 3-6211

Compliments of  
**MILJO DRIVE-IN RESTAURANT**

5215 Oleander Drive Wilmington, N. C.

Compliments of  
**A. J. HARRIS GROCERY**

Bolton, North Carolina

Your Good Neighbor in The  
Wilmington Area  
**CHIC CHIC DRIVE-IN**

**Buy the BEST!**  
Buy **TEXACO**  
Distributed by  
**GODWIN OIL COMPANY, INC.**  
Wilmington, N. C.

**TATUM'S HANOVER CLEANERS**

3544 Oleander Drive — Tel. ROger 3-7955  
WILMINGTON, N. C.

Compliments of  
**MERRITT-HOLLAND GAS CO.**

**Bottled — Bulk — Metered Gas**  
Wilmington, N. C. RO 3-3301

**BROWNING PHOTO CENTER**

**Photo Finishers**  
**Color — Black and White**  
"Your Kodak Dealer"  
Phone ROger 2-8872 119 Market Street  
WILMINGTON, N. C.

All Lines Insurance — Real Estate — Loans

**E. L. MATHEWS**

Rogers Mathews Res. ROger 3-8172  
214 Princess Street Dial ROger 3-2494  
WILMINGTON, N.C.



The mid-game point of mixed emotions.

**BELK-BEERY**  
WILMINGTON, NORTH CAROLINA  
Eastern Carolina's Most Modern  
Department Store

"Where the Family Bowls"

**CARDINAL LANES**

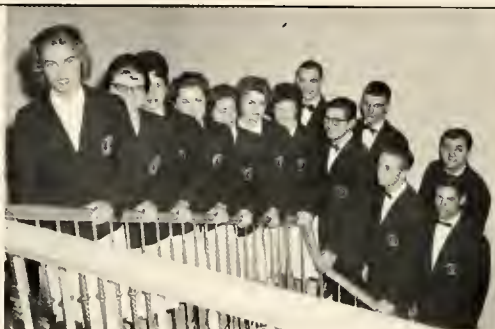
3516 Oleander Drive Wilmington, N. C.

## ALBERT F. PERRY & COMPANY

INSURANCE — BONDS

DIAL ROger 3-7313      230 Princess Street

Wilmington, North Carolina



The Top Twelve of the Wilmington College Chorus Climb the staircase to the music room.

Compliments  
of



### FUTRELLE'S PHARMACY

Prescriptions Filled  
Drugs—Fountain—Sundries—Cosmetics  
Sick Room Supplies  
Fast City Wide Delivery  
Monday thru Saturday  
9 A.M. to 8 P.M.  
129 Princess Street  
Wilmington, N. C.

*Alexander's*

"Lovely Evening Clothes"

118 Market Street

Compliments of

### BAREFOOTS & JACKSON

"Serving More People More Ways"

28 South Front Street

Dial ROger 3-1609



# SOUTHERN IRON AND METAL COMPANY

*Queensboro Steel Corporation*

13 Wright Street  
WILMINGTON, NORTH CAROLINA

## SNEEDEN AIR CONDITIONING AND REFRIGERATION CO.

Worthington Central Air Conditioning

Residential — Commercial — Industrial

Heat Pump Systems, for Summer-Winter Comfort

Phone ROger 3-2828

4601 Market St.

# WECT



CHANNEL

# 6

WILMINGTON, NORTH CAROLINA

## SERVING THE EASTERN CAROLINAS

**PEPSI-COLA BOTTLING  
COMPANY**



2045 Oreander Drive  
Wilmington, N. C.

**CITY-DIXIE LAUNDRY  
& DRY CLEANERS**

Dial RO 2-6696

412 South 17th Street  
Wilmington, N. C.

Compliments of

**SUNSET ROLLER RINK**

Shipyards Boulevard

Wilmington, N. C.      RO 3-2415

**JEWELL-STRICKLAND  
AUTO PARTS COMPANY**

WHOLESALE AUTO PARTS  
INDUSTRIAL BEARINGS

Your Friendly Auto Parts Jobber  
Bert Jewell J. Holmes Davis, Jr.  
Dial RO 2-8533      5 N. Third St.  
Wilmington, N. C.



Miss Anne West poses for her part in "Family Affair."

Best Wishes to Class of '62

**WILMINGTON  
PRINTING COMPANY**

Printers — Lithographers  
221-229 N. Second Street  
Wilmington, N. C.

NOW IN OUR NEW HOME



**PEOPLES SAVINGS  
And Loan Association**

Fourth and Market St.,  
Wilmington, N. C.  
"Where The Clock Chimes"



HELPING TO BUILD

*A Finer Carolina*

**CAROLINA POWER & LIGHT COMPANY**

Don't Monkey with Your Typewriter

E. N. Small      Call RO 2-5092      Edwin N. Small, Jr.

**TYPEWRITER INSPECTION COMPANY**

Typewriters, Adding Machines, Cash Registers  
Mimeographs, Duplicators, Portable Typewriters

5th & Greenfield Street      Wilmington, N. C.  
Sales and Service

RAH! . . . RAH! . . . RAH! . . .

WHO IS THE "NEWS" FOR?

**THE STUDENTS AT WILMINGTON COLLEGE**

Sports News—School News—Local News—National—World News  
ALL IN ONE PACKAGE 13 TIMES A WEEK

Your

**STAR-NEWS NEWSPAPERS**

TAILORED FOR YOU...

*Blocks*

SOUTHLAND

**SPORTSWEAR**

- Luxury Fabrics
- Handsome Styling
- Washable • Popular Priced



P. O. Box 420 — City

Finest Quality  
Diamonds—Watches  
Convenient Terms  
**STANLEY'S JEWELERS**  
P. O. Box 1086  
Five N. Front Street  
Wilmington, N. C. RO 2-4095

**EFIRD'S DEPT. STORE**  
4 Ways to Shop  
Cash—Layaway—Budget—Charge  
Shop All Five Floors  
Wilmington, North Carolina

Compliments of



Best Wishes of  
**SEVEN-UP  
BOTTLING CO.**

Frostie Seven-Up Trueade

Jewelers—Silversmiths—Stationers

*Berman's*  
JEWELERS - SILVERSMITHS  
Front & Market Sts.  
Phone ROger 2-6241  
Wilmington, N. C.



109 Chestnut Street

**HALLSBORO TRADING  
COMPANY**

General Merchandise

Phone 2731 Hallsboro, N. C.

**TEMPERATURE CONTROL  
COMPANY**

Indoor COMFORT Contractors  
Julian McKeithan—Robert L. Cowan, Jr.  
3540 Oleander Drive Dial RO 2-2731  
Wilmington, N. C.

**WARD'S STATION**

Ward's Groceries, Gas, Bait, and

Fishing Tackle  
Compliments of  
Ward's Station  
Hallsboro, N. C.

**Restaurant**  
Charcoal Steaks—Seafood  
3911 Oleander Drive  
Private Dining Room



BUILDERS AND REALTY CORPORATION  
3548 Oleander Drive Wilmington, N. C.

Compliments of  
*Coastal*  
**ELECTRICAL SUPPLY CO., INC.**  
1620 Wright Street  
Wilmington, N. C.  
Wholesale Electrical Supplies

Shrubbery

Flowering Trees

### HILTON GARDEN CENTER

1606-1616 N. 4th St.

Wilmington, N. C.

"SE HyASVF

"Everything to beautify your home."  
Bedding plants Camellias Azaleas

### J. M. WEEKS OFFICE SUPPLY

Office Outfitters

School & Office Supplies

Furniture & Equipment

Phone ROger 2-5235

206 Princess



—SHOP—

### HANOVER CENTER

Free Parking for Over 600 Cars

16 STORES TO SERVE YOU

### CAROLINA SAVINGS AND LOAN ASSOCIATION

Third and Chestnut Streets

Wilmington, N. C.

Compliments of

### CITY OPTICAL COMPANY

Wilmington, N. C.

### VAUGHN and COMPANY

Stocks—Bonds—Mutual Funds—Underwriters

106 North Second Street

Wilmington, N. C.

### CENTER DRUG COMPANY

Prescription Druggists

Phone ROger 3-2481

Cor. 17th & Dawson Sts. Wilmington, N. C.

### THANKS . . .

The development of Wilmington College will involve many persons from varied fields of society as it steadily reaches its goal as a successful, established college of popular prestige. Indeed the development began some time ago in historical Wilmington and has already compiled an exceedingly long list of efforts by people toward its status of today, but growth never stands still and the list will ever grow longer as each year at Wilmington College adds something to its standing.

The **Fledgling** Staff has been subject to the efforts of people in combining strength to attain their desired goal as we have ventured into the past of Wilmington to present Wilmington College in the background of Wilmington. Thus we have recognized the work of the many factors which have contributed to the making of a college and its organization. The most important organization is that of the adjustment of the students. We now want to thank the many people who have helped make this yearbook the first yearbook of the new campus of Wilmington College:

**the merchants of Wilmington** for supporting us

**the people of Wilmington** for trusting us

**the students of Wilmington College** for their contributions

**the faculty of Wilmington College** for their help and guidance

and **George, Annie, Mr. Davis, Mr. High, Ed, Coach, Dean Crews, Dr. Randall, the Board of Trustees, Janice, Bonnie, Nancy, Rita, and Gerald.**

Miss Frances Best

Editor, **The Fledgling**

# INDEX

Advertisements .....	116	National Junior College	
Administration .....	14	Champion Baseball Team .....	110
		Miss North Carolina .....	94
Circle K Club .....	75	Panmathan Society .....	66
Cotillion Club .....	62	Pen Pushers .....	72
		<i>Seahawk</i> Staff .....	76
Dedication .....	6	Sophomore Class Officers .....	20
		Sophomore Class .....	21
Engineers Club .....	64	Sophomore Superlatives .....	90
		Student Council .....	60
Faculty .....	16	Student Life .....	8
<i>Fledgling</i> Beauties .....	96	Student Nurses .....	57
Miss <i>Fledgling</i> .....	95	Student Nurse Officers .....	56
<i>Fledgling</i> Staff .....	78		
Foreward .....	5	Wilmington College Band .....	70
Freshman Class Officers .....	44	Wilmington College Basketball Team .....	100
Freshman Class .....	45	Wilmington College Cheerleaders .....	105
		Wilmington College Chess Club .....	67
Homecoming Queen .....	86	Wilmington College Chorus .....	68
Homecoming Court .....	87	Wilmington College Dramatics .....	63
Homecoming Week .....	88	Wilmington College Golf Team .....	106
		Wilmington College Merchandising Club .....	74
May Court .....	84	Wilmington College Tennis Team .....	108
May Queen .....	82		







ARCHIVE COLLECTION



RANDALL LIBRARY

LD  
3978  
.F5  
1962  
C.5

RANDALL LIBRARY - UNCW



3 0690 1620949 6

